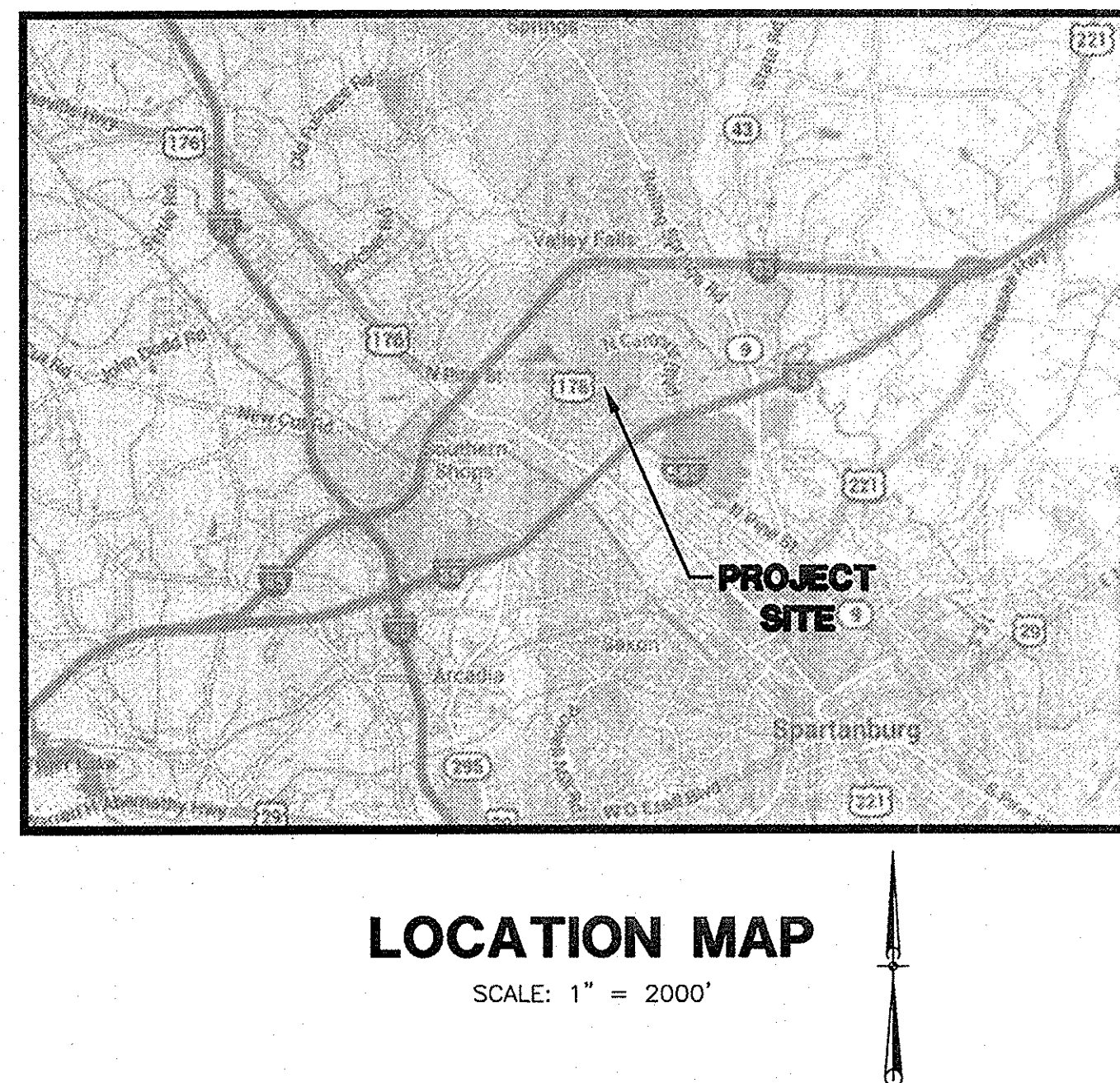
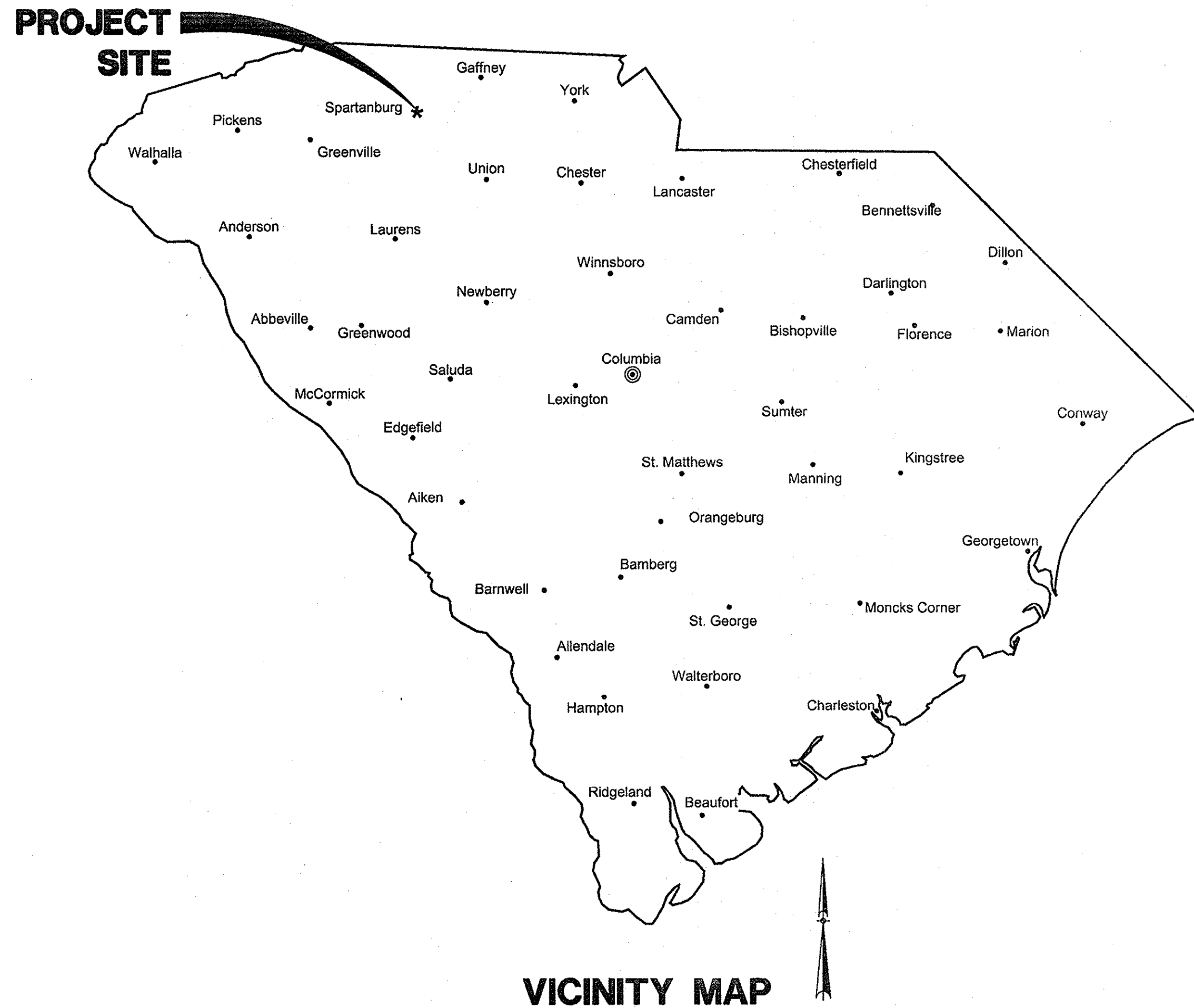


THIS DRAWING IS THE PROPERTY OF URS CORPORATION, AND IS NOT TO BE REPRODUCED OR COPIED IN WHOLE OR IN PART. IT IS ONLY TO BE USED FOR THE PROJECT AND SITE SPECIFICALLY IDENTIFIED HEREIN AND IS NOT TO BE USED ON ANY OTHER PROJECT.  
IN PROJECTS 46423272, DRAWINGS ARE SHOWN AS BIDDING SHEETS. STREET AND PARKING LOT MAINTENANCE AND REPAIRS 00-46423272P COVER DWS 6/2/2014 2:33:14 PM



# RE BID USC UPSTATE STREET AND PARKING LOT MAINTENANCE AND REPAIRS

PREPARED FOR  
**UNIVERSITY OF SOUTH CAROLINA  
SPARTANBURG, SOUTH CAROLINA**

## SHEET INDEX

### SHEET

GENERAL NOTES, LEGEND, SYMBOLS & ABBREVIATIONS  
EXISTING CONDITIONS AND DEMOLITION PLAN  
SITE IMPROVEMENT PLAN  
SITE DETAILS

### SHEET No.

1  
2-3  
4-5  
6-7

BASE BID: SITE F AND SITE G  
SITE E IS NOT IN CONTRACT

3 DAYS BEFORE DIGGING AT USC UPSTATE CALL:

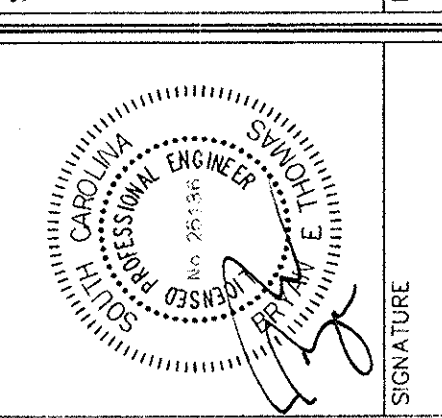
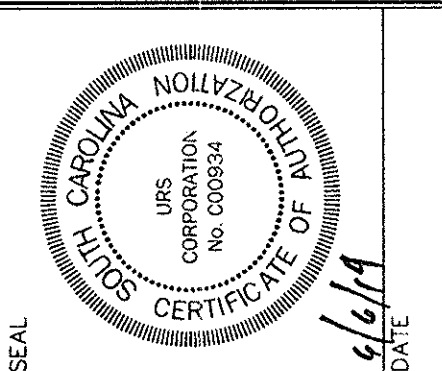


1. PALMETTO UTILITY PROTECTION SERVICE, INC. (PUPS)  
2. METRO WATER: 1-864-503-0822

ALL UTILITIES MAY NOT BE A MEMBER OF PUPS.  
COORDINATE WITH LOCAL UTILITY COMPANIES FOR  
MARKING OF THEIR UTILITIES ALSO.

**STATE PROJECT NO.**  
**H34-9544-JM-F**

**BID DOCUMENTS**  
THESE DOCUMENTS ARE FOR THE  
PURPOSE OF SOLICITATION OF BIDS AND  
ARE NOT FOR USE FOR CONSTRUCTION



**URS**

**URS Corporation**  
101 Research Drive  
Columbia, South Carolina 29203  
Telephone (803) 254-4400 Fax (803) 771-6676  
www.urscorp.com

JUNE 6, 2014

PROJECT NO.  
46423272

FILE NO.  
36,308-B91



ABBREVIATION		WORD	
A	AGGR	F	CONT.
AGGR	AND	FIL	FILLET
APPROX	APPROXIMATE	FLT	FINISH
ASPH	ASPHALT	FIN	FINISH
AT	AT	FLG	FLANGE
AUTH	AUTHORIZED	FLU	FLUID
AVE	AVENUE	FND	FOUNDATION
AVG	AVERAGE	FM	FORCEMAIN
AZ	AZIMUTH	FR	FREQUENCY
B	BASE	G	GALLON
BRG	BEARING	GAL	GALVANIZE
BES	BENCH MARK	GEN	GENERAL
BET	BETWEEN	GL	GRADE
BS	BOTH SIDES	GL	GRADE LINE
BOT	BOTTOM	GRO	GROUND
B/	BOTTOM OF	H	HDPE
BO	BOUNDARY	HDPE	HIGH DENSITY POLYETHYLENE
BRK	BRIDGE	HPT	HIGH POINT
BRDG	BRIDGE	HOR	HORIZONTAL
BLDG	BUILDING	HR	HOUR
BY	BALL VALVE	HW	HEADWALL
BFV	BUTTERFLY VALVE	HYD	HYDRAULIC
C	CALCULATE	I	INCH
CB	CATCH BASIN	IN	IN (OR ")
CIP	CAST-IN-PLACE	IPS	INCLUDE
CI	CAST IRON	IND	INDUSTRIAL
CEM	CEMENT	INDO	INDOOR
CTR	CENTER	IND	INDUSTRIAL
CL	CENTERLINE	ID	INSIDE DIAMETER
CG	CENTER OF GRAVITY	INT	INTERSECT
C to C	CENTER TO CENTER	INT	INTERSECT
CHAM	CHAMFER	INV	INVERT
CO	CHANGE	IR	IRON
CHAN	CHANNEL	J	JUNCTION
CHK	CHECK	JCT	JUNCTION BOX
CHD	CHECK VALVE	JB	JUNCTION BOX
CIR	CIRCLE	L	LATITUDE
CIRC	CIRCULAR	LT	LEFT
CO	CIRCUMFERENCE	L.P.	LOW POINT
COL	CLOCKWISE	M	MANHOLE
COMB.	COMBINATION	MH	MANHOLE
CO	COMPANY	MFR	MANUFACTURE
CONC	CONCRETE	MAT	MATERIAL
CMP	CORRUGATED METAL PIPE	MAX	MAXIMUM
CMU	CONCRETE MASONRY UNIT	MED	MEDIUM
COND	CONDITION	MET	METER
CONN	CONNECT	M	MILES
CONT	CONTINUOUS	MPH	MILE PER HOUR
CO	CORD	MIN	MINIMUM
CORP	CORPORATION	MIN (OR ")	MINUTE
XSECT	CROSS SECTION	MISC	MISCELLANEOUS
CJ	CUBIC	MOD	MODEL
CU	CUBIC CENTIMETER	MULT	MULTIPLE
CFM	CUBIC FEET PER MINUTE	N	NEGATIVE
CFS	CUBIC FEET PER SECOND	NEG	NOT IN CONTRACT
CU FT	CUBIC FOOT	NIC	NEUTRAL
CU IN	CUBIC INCH	NOR	NORMAL
CU M	CUBIC METER	N	NORTH
CU YD	CUBIC YARD	N	NOT TO SCALE
CUR	CURRENT	NO. (OR #)	NUMBER
D	DECIMAL	O	ON CENTER
DEC	DEGREE	O/C	OFFSET
DEG (OR ")	DEGREE	O/S	OPPOSITE
DEPT	DEPARTMENT	OP'NG	OPENING
DSGN	DESIGN	OPP	OPPOSITE
DET	DETAIL	ORIG	ORIGINAL
DEVELOP	DEVELOP	OD	OUTSIDE DIAMETER
DI	DROP INLET	OA	OVERALL
DIA	DIAGONAL	OHP	OVERHEAD POWER
DIA (OR Ø)	DIAMETER	OVP	OVERFLOW
DIM.	DIMENSION	P	PERMANENT
DISCH	DISCHARGE	PERP	PERPENDICULAR
DIST	DISTANCE	PL	PROPERTY LINE
DO	DITTO	PL	POUND
DN	DOWN	PSI	POUNDS PER SQUARE INCH
DFTG	DRAFTING	PWR	PREFERRED
DWG	DRAWING	PTD	PREPARED
DR	DRIVE	PREP	PREPARE
DIP	DUCTILE IRON	PRESS.	PRESSURE
	DUCTILE IRON PIPE	PCO	PRESSURE CLEANOUT
E	EACH	PT	PRESSURE TREATED
EA	EACH FACE	PROC	PROCESS
EF	EACH SIDE	PROD	PRODUCTION
EW	EAST	PF	PROFILE
EFF	EFFECTIVE	PROJ	PROJECT
ELL	ELBOW	R	RADIUS
ELEV	ELEVATION	RR	RAILROAD
ENGR	ENGINEER	RECD	RECEIVED
EQ	EQUAL	REC	RECORD
EQUIP.	EQUIPMENT	REF	REFERENCE
EQUIV	EQUIVALENT	REF L	REFERENCE LINE
EST	ESTIMATE	REINF	REINFORCING
EXP	EXPANSION	REIN	REINFORCE
EXT	EXPANSION JOINT	REQ	REQUIRED
	EXTerior	REQD	REQUIRED
F	FLARED END SECTION	REV	REVISION (REVISED)
F to F	FACE TO FACE	RESTR	RESTRAINED JOINT
FT (OR ")	FEET	RT	RIGHT HAND
FM	FEET PER MINUTE	RH	RIGHT HAND
FPS	FEET PER SECOND	R/W	RIGHT OF WAY
FRP	FIBERGLASS REINFORCED PLASTIC		
FLO	FIELD		
FIG.	FIGURE		

### GENERAL NOTES

- REFERENCE IS MADE TO THE FOLLOWING:
  - BOUNDARY AND TOPOGRAPHIC SURVEY PREPARED FOR USC UPSTATE BY BP BARBER, DATED NOVEMBER 24, 2009.
  - PARTIAL SITE SURVEY BY BP BARBER, DATED FEBRUARY 15, 2008.
  - BOUNDARY AND TOPOGRAPHICAL SURVEY PREPARED FOR USC UPSTATE BY URS CORPORATION, DATED MARCH 5, 2014.
- ALL ELEVATIONS SHOWN ARE BASED ON:  
HORIZONTAL: SOUTH CAROLINA STATE PLANE COORDINATE NAD 83  
VERTICAL: NAVD 88
- VERIFY ALL FIELD CONDITIONS AND THE EXACT LOCATIONS OF ALL UNDERGROUND UTILITIES PRIOR TO BEGINNING DEMOLITION AND CONSTRUCTION. IF CONDITIONS ARE DIFFERENT FROM THAT SHOWN ON THE PLANS, STOP WORK AND NOTIFY THE ENGINEER.
- ALL WORK FOR THE PROJECT SHALL CONFORM TO THE PROJECT SPECIFICATIONS FOUND IN THE PROJECT MANUAL (CONTRACT DOCUMENTS AND SPECIFICATIONS).
- PROMPTLY INFORM THE ENGINEER OF ANY ERROR OR DISCREPANCY DISCOVERED IN THESE DRAWINGS OR SPECIFICATIONS OR CONFLICT BETWEEN THE DRAWINGS OR SPECIFICATIONS.
- ALL EXCESS TOPSOIL FROM THE PROJECT SITES SHALL BE THE PROPERTY OF THE OWNER AND SHALL BE PLACED AT A LOCATION ON CAMPUS DETERMINED BY THE OWNER.

### LEGEND

EXISTING	NEW
CONTOURS (1' & 2')	836
CONTOURS (5' & 10')	835
EDGE OF PAVEMENT	
CURB & GUTTER	
CENTERLINE OF ROADWAY	
PROPERTY LINE	
RIGHT-OF-WAY	
LIMITS OF WORK	
ITEMS TO BE DEMOLISHED	
TREE PROTECTION	
TREE	
SILT FENCE	
WETLANDS	
WETLANDS BUFFER	
FENCE LINE	
GUARD RAIL	
TREE LINE	
SURFACE DRAINAGE FLOW	
STORM DRAINAGE	
CATCH BASIN	
DROP INLET	
YARD INLET	
JUNCTION BOX	
SANITARY SEWER	
SEWER FORCE MAIN	
SEWER MANHOLE	
SEWER VALVE	
AIR RELEASE MANHOLE	
SEWER CLEANOUT	
WATER LINE	
FIRE HYDRANT	
WATER METER	
WATER VALVE	
GAS LINE	
GAS VALVE	
UNDERGROUND ELECTRIC	
OVERHEAD POWER	
SIGN	
POWER POLE	
GUY WIRE	
GUY POLE	
LAMP POLE	
SERVICE POLE	
LIGHT POLE	
ELECTRIC MANHOLE	
ELECTRIC TRANSFORMER	
ELECTRIC BOX	
UNDERGROUND TELEPHONE	
TELEPHONE PEDESTAL	
TELEPHONE MANHOLE	
UNDERGRD. CABLE TV	
CABLE TV PEDESTAL	
MAIL BOX	
UNDERGRD. FIBER OPTIC LINE	

### Campus Map Legend

A. John C. Stockwell Administration Building  
B. Library/Honors Program Office (Lib 252)  
C. G. B. Hodge Center/Arena  
D. Upstate Rotary International Peace Park  
E. Media Center  
F. Horace C. Smith Science Building  
G. Humanities & Performing Arts Center  
H. Academic Annex 1 and 2 (ACAD/ACAD)  
I. College of Arts & Sciences Building  
J. Burroughs Child Development Center  
K. Glen B. Sansbury, Jr. Campus Life Center  
L. The P. Kathryn Hicks Visual Arts Center  
M. Dr. Lawrence E. Reid Garden Pavilion  
N. Susan Jacobs Arboretum  
O. Science Trail  
P. The Villas  
Q. Palmetto House  
R. Magnolia House  
S. John W. Ramsey Center  
T. Health Education Complex/Wellness Center  
U. Mary Black School of Nursing  
V. School of Education  
W. Enrollment Management  
X. Bookstore  
Y. Smith Farmhouse/Athletic Annex  
Z. Soccer Fields  
AA. Health Services  
AB. University Public Safety  
AC. University Tennis Complex  
AD. University Readiness Center/SC National Guard  
AE. Louis F. Howell Athletic Complex  
AF. C. M. Smith Stadium  
AG. Cleveland S. Harley Baseball Park  
AH. County University Soccer Stadium  
AI. Facilities Management Complex  
AJ. University Services Building  
AK. Post/Shipping & Receiving  
AL. Intramural Field

### NOTES

1. SITES A-D ARE NOT INCLUDED IN THIS PROJECT

### OVERALL SITE MAP

NOT TO SCALE

### DETAIL REFERENCES

1. DETAIL NUMBER  
2. SHEET WHERE DETAIL APPEARS  
3. DETAIL NUMBER  
4. SHEET WHERE DETAIL IS NOTED  
5. USED TO INDICATE THAT DETAIL IS TYPICAL AT MULTIPLE PLACES.

### STRUCTURE

TYPE: CB, A, 1  
REFERENCE PROFILE ALIGNMENT

### PIPING

N (NEW)  
E (EXISTING)  
A (ABANDONED)  
F (FUTURE)  
T (TEMPORARY)

PIPE IDENTIFIER: N, 18, SD  
LINE SIZE

### MATERIALS

NEW ASPHALT PAVEMENT  
CONCRETE  
EXISTING GRADE  
FINISHED GRADE  
GRANULAR FILL (ROCK/GRAVEL)  
RIP RAP

### GENERAL NOTES

- REFERENCE IS MADE TO THE FOLLOWING:
  - BOUNDARY AND TOPOGRAPHIC SURVEY PREPARED FOR USC UPSTATE BY BP BARBER, DATED NOVEMBER 24, 2009.
  - PARTIAL SITE SURVEY BY BP BARBER, DATED FEBRUARY 15, 2008.
  - BOUNDARY AND TOPOGRAPHICAL SURVEY PREPARED FOR USC UPSTATE BY URS CORPORATION, DATED MARCH 5, 2014.
- ALL ELEVATIONS SHOWN ARE BASED ON:  
HORIZONTAL: SOUTH CAROLINA STATE PLANE COORDINATE NAD 83  
VERTICAL: NAVD 88
- VERIFY ALL FIELD CONDITIONS AND THE EXACT LOCATIONS OF ALL UNDERGROUND UTILITIES PRIOR TO BEGINNING DEMOLITION AND CONSTRUCTION. IF CONDITIONS ARE DIFFERENT FROM THAT SHOWN ON THE PLANS, STOP WORK AND NOTIFY THE ENGINEER.
- ALL WORK FOR THE PROJECT SHALL CONFORM TO THE PROJECT SPECIFICATIONS FOUND IN THE PROJECT MANUAL (CONTRACT DOCUMENTS AND SPECIFICATIONS).
- PROMPTLY INFORM THE ENGINEER OF ANY ERROR OR DISCREPANCY DISCOVERED IN THESE DRAWINGS OR SPECIFICATIONS OR CONFLICT BETWEEN THE DRAWINGS OR SPECIFICATIONS.
- ALL EXCESS TOPSOIL FROM THE PROJECT SITES SHALL BE THE PROPERTY OF THE OWNER AND SHALL BE PLACED AT A LOCATION ON CAMPUS DETERMINED BY THE OWNER.

### LEGEND

EXISTING	NEW
CONTOURS (1' & 2')	836
CONTOURS (5' & 10')	835
EDGE OF PAVEMENT	
CURB & GUTTER	
CENTERLINE OF ROADWAY	
PROPERTY LINE	
RIGHT-OF-WAY	
LIMITS OF WORK	
ITEMS TO BE DEMOLISHED	
TREE PROTECTION	
TREE	
SILT FENCE	
WETLANDS	
WETLANDS BUFFER	
FENCE LINE	
GUARD RAIL	
TREE LINE	
SURFACE DRAINAGE FLOW	
STORM DRAINAGE	
CATCH BASIN	
DROP INLET	
YARD INLET	
JUNCTION BOX	
SANITARY SEWER	
SEWER FORCE MAIN	
SEWER MANHOLE	
SEWER VALVE	
AIR RELEASE MANHOLE	
SEWER CLEANOUT	
WATER LINE	
FIRE HYDRANT	
WATER METER	
WATER VALVE	
GAS LINE	
GAS VALVE	
UNDERGROUND ELECTRIC	
OVERHEAD POWER	
SIGN	
POWER POLE	
GUY WIRE	
GUY POLE	
LAMP POLE	
SERVICE POLE	
LIGHT POLE	
ELECTRIC MANHOLE	
ELECTRIC TRANSFORMER	
ELECTRIC BOX	
UNDERGROUND TELEPHONE	
TELEPHONE PEDESTAL	
TELEPHONE MANHOLE	
UNDERGRD. CABLE TV	
CABLE TV PEDESTAL	
MAIL BOX	
UNDERGRD. FIBER OPTIC LINE	

### STATE PROJECT NO.

H34-9544-JM-F

### BID DOCUMENTS

THESE DOCUMENTS ARE FOR THE PURPOSE OF SOLICITATION OF BIDS AND ARE NOT FOR USE FOR CONSTRUCTION

### REVISIONS

NO.	DESCRIPTION	DATE	BY
1			
2			
3			
4			
5			
6			
7			
8			
9			
10			

### APPROVALS

PROJECT ENG.	DESIGNED BY	DRAWN BY	CHECKED BY	APPROVED BY

### GENERAL NOTES, LEGEND, SYMBOLS, & ABBREVIATIONS

101 Research Drive  
Columbia, South Carolina 29203  
Telephone (803) 254-4400 • Fax (803) 771-6676  
www.urscorp.com

### USC UPSTATE STREET AND PARKING LOT MAINTENANCE AND REPAIRS

PREPARED FOR THE UNIVERSITY OF SOUTH CAROLINA

### CONTRACTOR TO PROVIDE ON-SITE RESTROOM FACILITY AT A LOCATION DEEMED ACCEPTABLE BY THE OWNER.

### CONTRACTOR TO PROVIDE ON-SITE CONCRETE WASHOUT AREA PER DETAIL ON SHEET 13 AND PROPERLY REMOVE AT PROJECT COMPLETION

### STATE PROJECT NO. H34-9544-JM-F

### BID DOCUMENTS

THESE DOCUMENTS ARE FOR THE PURPOSE OF SOLICITATION OF BIDS AND ARE NOT FOR USE FOR CONSTRUCTION

### REVISIONS

NO.	DESCRIPTION	DATE	BY
1			
2			
3			
4			
5			
6			
7			
8			
9			
10			

### APPROVALS

PROJECT ENG.	DESIGNED BY	DRAWN BY	CHECKED BY	APPROVED BY

### GENERAL NOTES, LEGEND, SYMBOLS, & ABBREVIATIONS

101 Research Drive  
Columbia, South Carolina 29203  
Telephone (803) 254-4400 • Fax (803) 771-6676  
www.urscorp.com

### USC UPSTATE STREET AND PARKING LOT MAINTENANCE AND REPAIRS

PREPARED FOR THE UNIVERSITY OF SOUTH CAROLINA

### CONTRACTOR TO PROVIDE ON-SITE RESTROOM FACILITY AT A LOCATION DEEMED ACCEPTABLE BY THE OWNER.

### CONTRACTOR TO PROVIDE ON-SITE CONCRETE WASHOUT AREA PER DETAIL ON SHEET 13 AND PROPERLY REMOVE AT PROJECT COMPLETION

### STATE PROJECT NO. H34-9544-JM-F

### BID DOCUMENTS

THESE DOCUMENTS ARE FOR THE PURPOSE OF SOLICITATION OF BIDS AND ARE NOT FOR USE FOR CONSTRUCTION

### REVISIONS

NO.	DESCRIPTION	DATE	BY
1			
2			
3			
4			
5			
6			
7			
8			
9			
10			

### APPROVALS

PROJECT ENG.	DESIGNED BY	DRAWN BY	CHECKED BY	APPROVED BY

### GENERAL NOTES, LEGEND, SYMBOLS, & ABBREVIATIONS

101 Research Drive  
Columbia, South Carolina 29203  
Telephone (803) 254-4400 • Fax (803) 771-6676  
www.urscorp.com

### USC UPSTATE STREET AND PARKING LOT MAINTENANCE AND REPAIRS

PREPARED FOR THE UNIVERSITY OF SOUTH CAROLINA

### CONTRACTOR TO PROVIDE ON-SITE RESTROOM FACILITY AT A LOCATION DEEMED ACCEPTABLE BY THE OWNER.

### CONTRACTOR TO PROVIDE ON-SITE CONCRETE WASHOUT AREA PER DETAIL ON SHEET 13 AND PROPERLY REMOVE AT PROJECT COMPLETION

### STATE PROJECT NO. H34-9544-JM-F

### BID DOCUMENTS

THESE DOCUMENTS ARE FOR THE PURPOSE OF SOLICITATION OF BIDS AND ARE NOT FOR USE FOR CONSTRUCTION

### REVISIONS

NO.	DESCRIPTION	DATE	BY
1			
2			
3			
4			
5			
6			
7			
8			
9			
10			

### APPROVALS

PROJECT ENG.	DESIGNED BY	DRAWN BY	CHECKED BY	APPROVED BY

### GENERAL NOTES, LEGEND, SYMBOLS, & ABBREVIATIONS

101 Research Drive  
Columbia, South Carolina 29203  
Telephone (803) 254-4400 • Fax (803) 771-6676  
www.urscorp.com

### USC UPSTATE STREET AND PARKING LOT MAINTENANCE AND REPAIRS

PREPARED FOR THE UNIVERSITY OF SOUTH CAROLINA

### CONTRACTOR TO PROVIDE ON-SITE RESTROOM FACILITY AT A LOCATION DEEMED ACCEPTABLE BY THE OWNER.

### CONTRACTOR TO PROVIDE ON-SITE CONCRETE WASHOUT AREA PER DETAIL ON SHEET 13 AND PROPERLY REMOVE AT PROJECT COMPLETION

### STATE PROJECT NO. H34-9544-JM-F

### BID DOCUMENTS

THESE DOCUMENTS ARE FOR THE PURPOSE OF SOLICITATION OF BIDS AND ARE NOT FOR USE FOR CONSTRUCTION

### REVISIONS

NO.	DESCRIPTION	DATE	BY
1			
2			
3			
4			
5			
6			
7			
8			
9			
10			

### APPROVALS

PROJECT ENG.	DESIGNED BY	DRAWN BY	CHECKED BY	APPROVED BY

### GENERAL NOTES, LEGEND, SYMBOLS, & ABBREVIATIONS

101 Research Drive  
Columbia, South Carolina 29203  
Telephone (803) 254-4400 • Fax (803) 771-6676  
www.urscorp.com

### USC UPSTATE STREET AND PARKING LOT MAINTENANCE AND REPAIRS

PREPARED FOR THE UNIVERSITY OF SOUTH CAROLINA

### CONTRACTOR TO PROVIDE ON-SITE RESTROOM FACILITY AT A LOCATION DEEMED ACCEPTABLE BY THE OWNER.

### CONTRACTOR TO PROVIDE ON-SITE CONCRETE WASHOUT AREA PER DETAIL ON SHEET 13 AND PROPERLY REMOVE AT PROJECT COMPLETION

### STATE PROJECT NO. H34-9544-JM-F

### BID DOCUMENTS

THESE DOCUMENTS ARE FOR THE PURPOSE OF SOLICITATION OF BIDS AND ARE NOT FOR USE FOR CONSTRUCTION

### REVISIONS

NO.	DESCRIPTION	DATE	BY
1			
2			
3			
4			
5			
6			
7			
8			
9			
10			

### APPROVALS

PROJECT ENG.	DESIGNED BY	DRAWN BY	CHECKED BY	APPROVED BY

### GENERAL NOTES, LEGEND, SYMBOLS, & ABBREVIATIONS

101 Research Drive  
Columbia, South Carolina 29203  
Telephone (803) 254-4400 • Fax (803) 771-6676  
www.urscorp.com

### USC UPSTATE STREET AND PARKING LOT MAINTENANCE AND REPAIRS

PREPARED FOR THE UNIVERSITY OF SOUTH CAROLINA

### CONTRACTOR TO PROVIDE ON-SITE RESTROOM FACILITY AT A LOCATION DEEMED ACCEPTABLE BY THE OWNER.

### CONTRACTOR TO PROVIDE ON-SITE CONCRETE WASHOUT AREA PER DETAIL ON SHEET 13 AND PROPERLY REMOVE AT PROJECT COMPLETION

### STATE PROJECT NO. H34-9544-JM-F

### BID DOCUMENTS

THESE DOCUMENTS ARE FOR THE PURPOSE OF SOLICITATION OF BIDS AND ARE NOT FOR USE FOR CONSTRUCTION

### REVISIONS

NO.	DESCRIPTION	DATE	BY
1			
2			
3			
4			
5			
6			
7			
8			
9			
10			

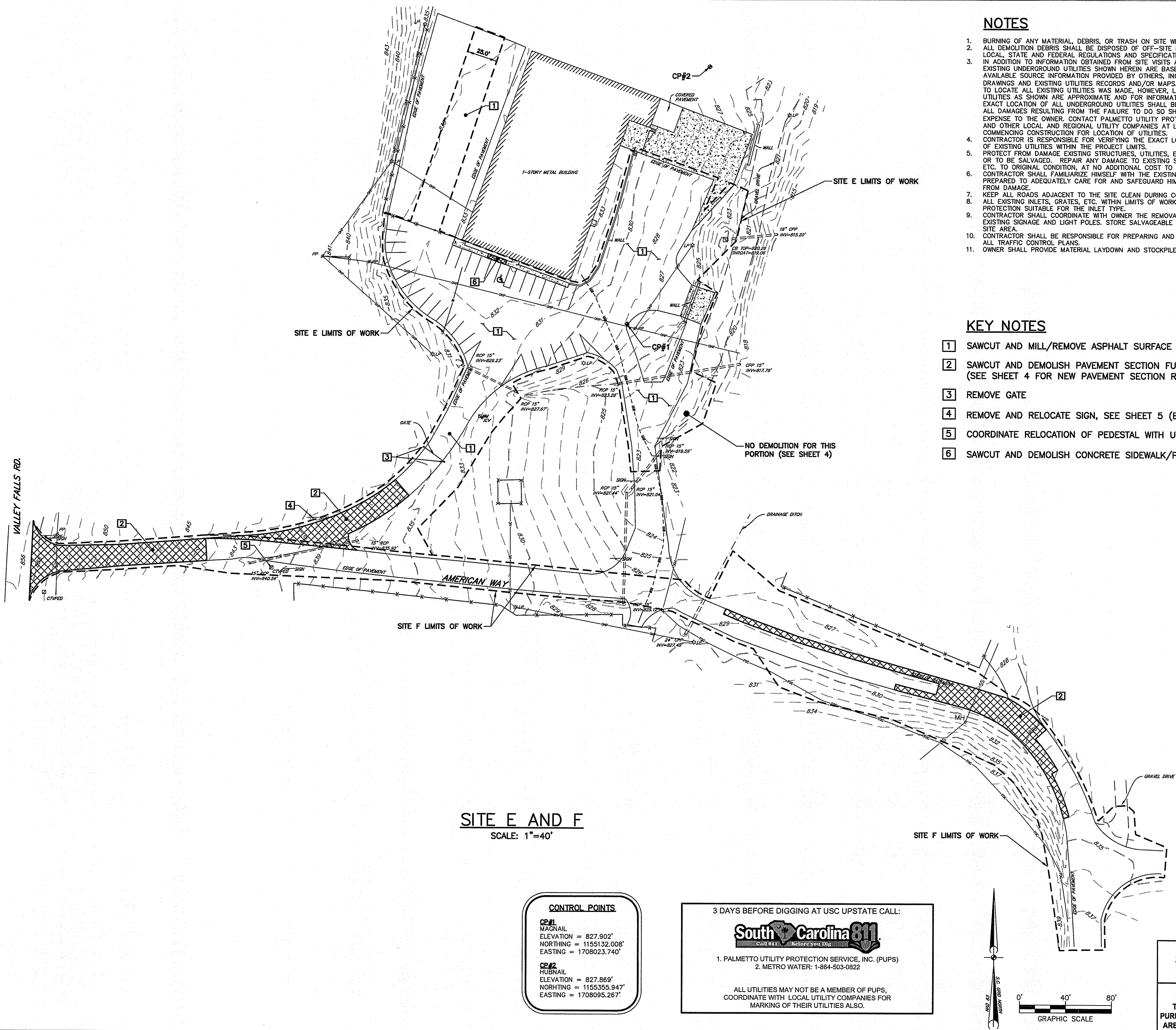
### APPROVALS

PROJECT ENG.	DESIGNED BY	DRAWN BY	CHECKED BY	APPROVED BY



THIS DRAWING IS THE PROPERTY OF URS CORPORATION, AND IS NOT TO BE REPRODUCED OR COPIED IN WHOLE OR IN PART. IT IS ONLY TO BE USED FOR THE PROJECT AND SITE SPECIFICALLY IDENTIFIED HEREIN AND IS NOT TO BE USED ON ANY OTHER PROJECT.

U:\PROJECTS\44423272\DRAWINGS\03-44423272SP\_DRAWING 6/3/2014 11:34:08 AM



REVISIONS	
NO.	DESCRIPTION

APPROVALS	
PROJECT ENG.	DESIGNED BY:
MDJ	MDJ

**URS**  
CORPORATION  
CERTIFICATE OF QUALITY  
6/6/14

**URS**  
CORPORATION  
ENGINEER  
NO. 25136  
6/6/14

**URS**  
101 Research Drive  
Columbia, South Carolina 29203  
Telephone (803) 254-4400 · Fax (803) 771-6676  
www.URSCorp.com

**EXISTING CONDITIONS AND DEMOLITION PLAN**  
**SITE E AND F**  
DATE: JUNE 6, 2014 SCALE: 1"=40'

**USC UPSTATE**  
STREET AND PARKING LOT  
MAINTENANCE AND REPAIRS  
PREPARED FOR  
**THE UNIVERSITY OF SOUTH CAROLINA**  
SPARTANBURG COUNTY SOUTH CAROLINA

STATE PROJECT NO.	
H34-9544-JM-F	
<b>BID DOCUMENTS</b>	
THESE DOCUMENTS ARE FOR THE PURPOSE OF SOLICITATION OF BIDS AND ARE NOT FOR USE FOR CONSTRUCTION	

DWG NAME	
N.B. NO.	
REF.	
PROJECT NO.	
46423272	
SHEET	2
OF	7
FILE NO. 36,308-B91	



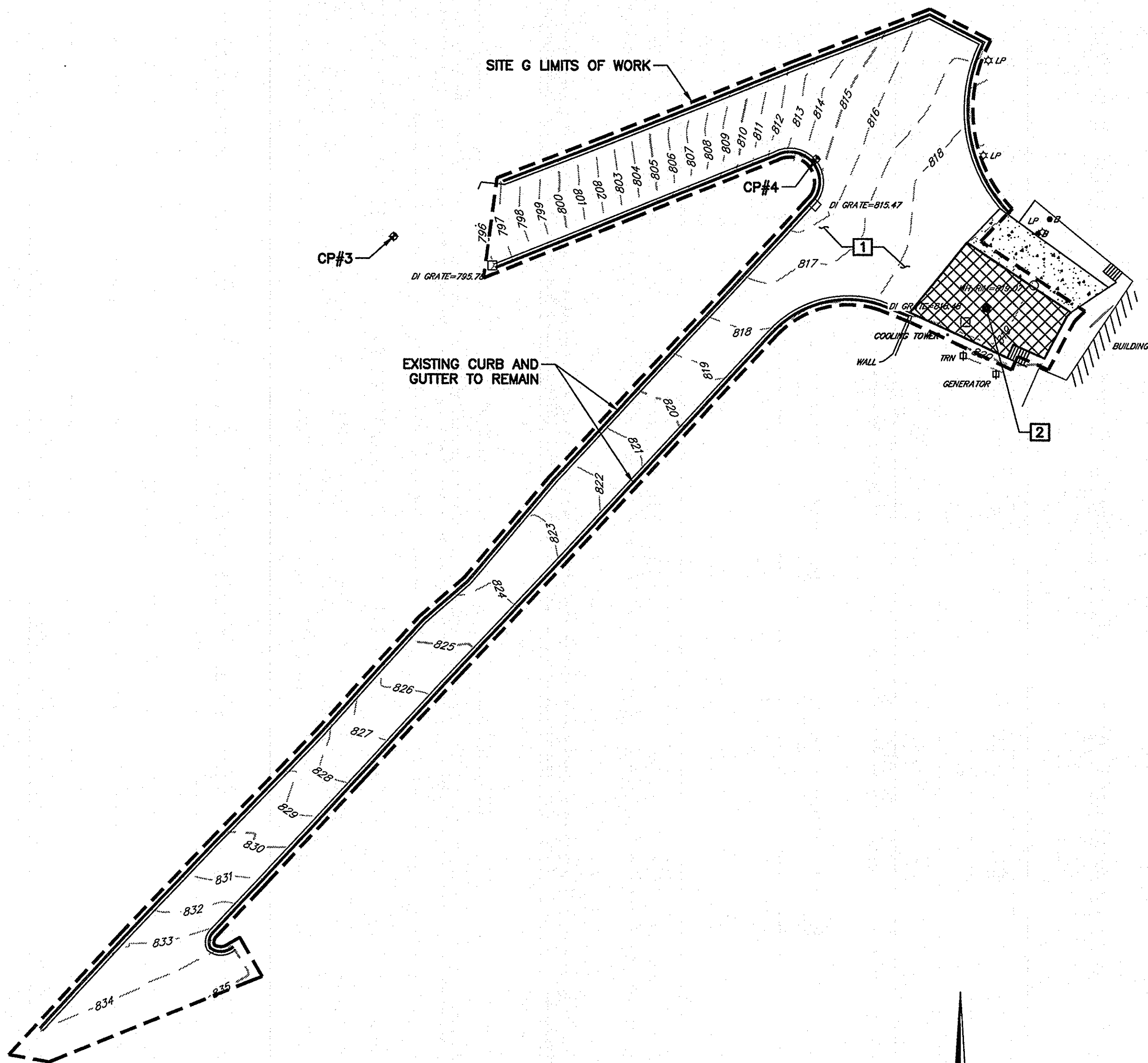
N:\PROJECTS\4423272\DRAWINGS\BID DRAWINGS\STREET AND PARKING LOT MAINTENANCE AND REPAIRS\SC-S3-4423272P - DOWLING 6/3/2014 1:33:26 PM THIS DRAWING IS THE PROPERTY OF URS CORPORATION, AND IS NOT TO BE REPRODUCED OR COPIED IN WHOLE OR IN PART. IT IS ONLY TO BE USED FOR THE PROJECT AND SITE SPECIFICALLY IDENTIFIED HEREIN AND IS NOT TO BE USED ON ANY OTHER PROJECT.

KEY NOTES

- 1 SAWCUT AND MILL/REMOVE ASPHALT SURFACE (±2")
- 2 SAWCUT AND DEMOLISH ASPHALT PAVEMENT FULL DEPTH

NOTES

1. BURNING OF ANY MATERIAL, DEBRIS, OR TRASH ON SITE WILL NOT BE PERMITTED.
2. ALL DEMOLITION DEBRIS SHALL BE DISPOSED OF OFF-SITE IN ACCORDANCE WITH ALL LOCAL, STATE AND FEDERAL REGULATIONS AND SPECIFICATIONS, LATEST REVISION.
3. IN ADDITION TO INFORMATION OBTAINED FROM SITE VISITS AND A FIELD SURVEY, THE EXISTING UNDERGROUND UTILITIES SHOWN HEREIN ARE BASED ON A COMBINATION OF AVAILABLE SOURCE INFORMATION PROVIDED BY OTHERS, INCLUDING AS-BUILT DRAWINGS AND EXISTING UTILITIES RECORDS AND/OR MAPS. A CONCERTED EFFORT TO LOCATE ALL EXISTING UTILITIES WAS MADE; HOWEVER, LOCATION OF UNDERGROUND UTILITIES AS SHOWN ARE APPROXIMATE AND FOR INFORMATION PURPOSES ONLY. THE EXACT LOCATION OF ALL UNDERGROUND UTILITIES SHALL BE VERIFIED AND ANY AND ALL DAMAGES RESULTING FROM THE FAILURE TO DO SO SHALL BE REPAIRED AT NO EXPENSE TO THE OWNER. CONTACT PALMETTO UTILITY PROTECTION SERVICE (PUPS) AND OTHER LOCAL AND REGIONAL UTILITY COMPANIES AT LEAST 72 HOURS PRIOR TO COMMENCING CONSTRUCTION FOR LOCATION OF UTILITIES.
4. CONTRACTOR IS RESPONSIBLE FOR VERIFYING THE EXACT LOCATIONS AND ELEVATIONS OF EXISTING UTILITIES WITHIN THE PROJECT LIMITS.
5. PROTECT FROM DAMAGE EXISTING STRUCTURES, UTILITIES, ETC. THAT ARE TO REMAIN OR TO BE SALVAGED. REPAIR ANY DAMAGE TO EXISTING STRUCTURES, UTILITIES, ETC. TO ORIGINAL CONDITION, AT NO ADDITIONAL COST TO THE OWNER.
6. CONTRACTOR SHALL FAMILIARIZE HIMSELF WITH THE EXISTING CONDITIONS AND BE PREPARED TO ADEQUATELY CARE FOR AND SAFEGUARD HIMSELF AND THE OWNER FROM DAMAGE.
7. KEEP ALL ROADS ADJACENT TO THE SITE CLEAN DURING CONSTRUCTION.
8. ALL EXISTING INLETS, GRATES, ETC. WITHIN LIMITS OF WORK SHALL RECEIVE INLET PROTECTION SUITABLE FOR THE INLET TYPE.
9. CONTRACTOR SHALL COORDINATE WITH OWNER THE REMOVAL AND OR RELOCATION OF EXISTING SIGNAGE AND LIGHT POLES. STORE SALVAGEABLE EQUIPMENT ON APPROVED SITE AREA.
10. CONTRACTOR SHALL BE RESPONSIBLE FOR PREPARING AND OBTAINING APPROVAL OF ALL TRAFFIC CONTROL PLANS.
11. OWNER SHALL PROVIDE MATERIAL LAYDOWN AND STOCKPILE AREAS ON CAMPUS.



SITE G  
SCALE: 1"=30'

CONTROL POINTS	
CP#3	MAGNAIL
ELEVATION	= 794.787'
NORTHING	= 1153160.787'
EASTING	= 1709241.131'
CP#4	HUBNAIL
ELEVATION	= 814.560'
NORTHING	= 1153187.130'
EASTING	= 1709383.977'

3 DAYS BEFORE DIGGING AT USC UPSTATE CALL:

**South Carolina 811**  
Call 811 Before you Dig

1. PALMETTO UTILITY PROTECTION SERVICE, INC. (PUPS)  
2. METRO WATER: 1-864-503-0822

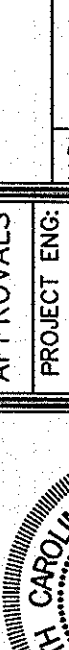
ALL UTILITIES MAY NOT BE A MEMBER OF PUPS, COORDINATE WITH LOCAL UTILITY COMPANIES FOR MARKING OF THEIR UTILITIES ALSO.

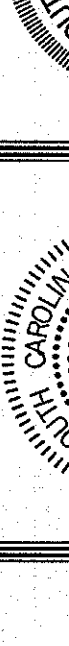
STATE PROJECT NO.  
H34-9544-JM-F


BID DOCUMENTS

THESE DOCUMENTS ARE FOR THE  
PURPOSE OF SOLICITATION OF BIDS AND  
ARE NOT FOR USE FOR CONSTRUCTION

REVISIONS		APPROVALS	
NO.	DESCRIPTION	PROJECT ENG.	DATE
		DESIGNED BY:	
		MDJ	
		DRAWN BY:	
		MDJ	
		CHKD BY:	
		EJM	
		APPROVED:	
		BET	

		6/6/14 DATE
---	--	----------------

		SIGNATURE
---	--	-----------

		101 Research Drive Columbia, South Carolina 29203 Telephone (803) 254-4400 • Fax (803) 771-6676 www.URSCorp.com
--	--	--

SHEET TITLE		DATE: JUNE 6, 2014	SCALE: 1"=30'
EXISTING CONDITIONS AND DEMOLITION PLAN			
SITE G			

PROJECT		USC UPSTATE STREET AND PARKING LOT MAINTENANCE AND REPAIRS PREPARED FOR THE UNIVERSITY OF SOUTH CAROLINA		SPARTANBURG COUNTY SOUTH CAROLINA	
.DWG NAME		SHEET			
N.B. NO.		3			
REF.		OF			
PROJECT NO.		7			
46423272					

FILE NO. 36,308-B91	
---------------------	--

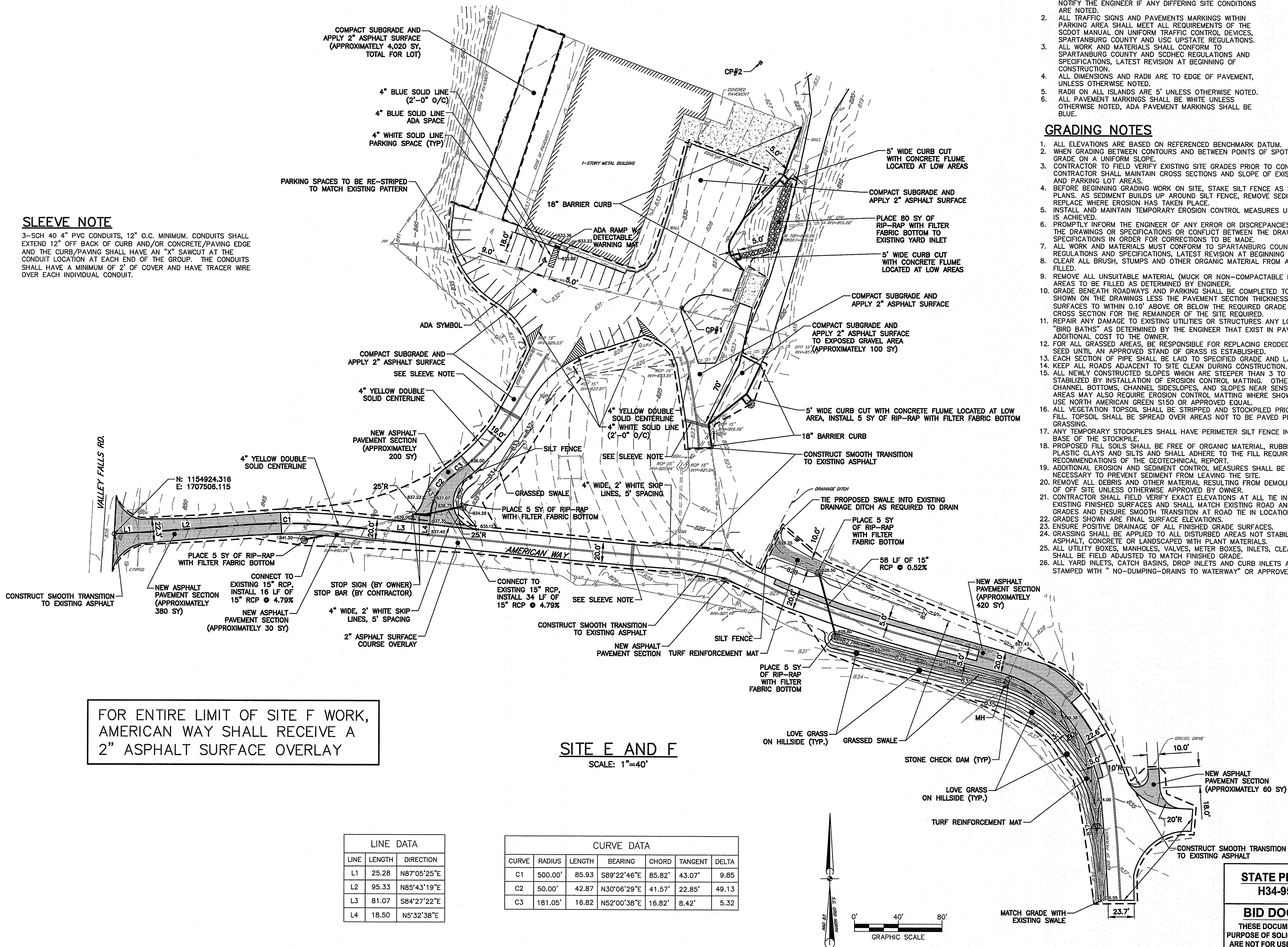


THIS DRAWING IS THE PROPERTY OF URS CORPORATION, AND IS NOT TO BE REPRODUCED OR COPIED IN WHOLE OR IN PART. IT IS ONLY TO BE USED FOR THE PROJECT AND SITE SPECIFICALLY IDENTIFIED HEREIN AND IS NOT TO BE USED ON ANY OTHER PROJECT.

N:\PROJECTS\46423272\DRAWINGS\03 DRAWINGS\03\STREET AND PARKING LOT MAINTENANCE AND REPAIRS\04-SC-46423272P-01.PWG 6/7/2014 10:24:38 AM

### SLEEVE NOTE

3-SCH 40 4" PVC CONDUITS, 12" O.C. MINIMUM. CONDUITS SHALL EXTEND 12" OFF BACK OF CURB AND/OR CONCRETE/PAVING EDGE AND THE CURB/PAVING SHALL HAVE AN "X" SAWCUT AT THE CONDUIT LOCATION AT EACH END OF THE GROUP. THE CONDUITS SHALL HAVE A MINIMUM OF 2' OF COVER AND HAVE TRACER WIRE OVER EACH INDIVIDUAL CONDUIT.



### STAKING NOTES

1. VERIFY FIELD CONDITIONS PRIOR TO CONSTRUCTION AND NOTIFY THE ENGINEER IF ANY DIFFERING SITE CONDITIONS ARE NOTED.
2. ALL TRAFFIC SIGNS AND PAVEMENTS MARKINGS WITHIN PARKING AREAS SHALL MEET ALL REQUIREMENTS OF THE SCOT MANUAL ON UNIFORM TRAFFIC CONTROL DEVICES, SPARTANBURG COUNTY AND USC UPSTATE REGULATIONS.
3. ALL WORK AND MATERIALS SHALL CONFORM TO SPARTANBURG COUNTY AND SCDHEC REGULATIONS AND SPECIFICATIONS, LATEST REVISION AT BEGINNING OF CONSTRUCTION.
4. ALL DIMENSIONS AND RADII ARE TO EDGE OF PAVEMENT, UNLESS OTHERWISE NOTED.
5. RADII ON ALL ISLANDS ARE 5' UNLESS OTHERWISE NOTED.
6. ALL PAVEMENT MARKINGS SHALL BE WHITE UNLESS OTHERWISE NOTED, ADA PAVEMENT MARKINGS SHALL BE BLUE.

### GRADING NOTES

1. ALL ELEVATIONS ARE BASED ON REFERENCED BENCHMARK DATUM.
2. WHEN GRADING BETWEEN CONTOURS AND BETWEEN POINTS OF SPOT ELEVATIONS, GRADE ON A UNIFORM SLOPE.
3. CONTRACTOR TO FIELD VERIFY EXISTING SITE GRADES PRIOR TO CONSTRUCTION. CONTRACTOR SHALL MAINTAIN CROSS SECTIONS AND SLOPE OF EXISTING ROADWAYS AND PARKING LOT AREAS.
4. BEFORE BEGINNING GRADING WORK ON SITE, STAKE SILT FENCE AS SHOWN ON THE PLANS. AS SEDIMENT BUILDS UP AROUND SILT FENCE, REMOVE SEDIMENT AND REPLACE WHERE EROSION HAS TAKEN PLACE.
5. INSTALL AND MAINTAIN TEMPORARY EROSION CONTROL MEASURES UNTIL STABILIZATION IS ACHIEVED.
6. PROMPTLY INFORM THE ENGINEER OF ANY ERROR OR DISCREPANCIES DISCOVERED IN THE DRAWINGS OR SPECIFICATIONS OR CONFLICT BETWEEN THE DRAWINGS OR SPECIFICATIONS IN ORDER FOR CORRECTIONS TO BE MADE.
7. ALL WORK AND MATERIALS MUST CONFORM TO SPARTANBURG COUNTY AND SCDHEC REGULATIONS AND SPECIFICATIONS, LATEST REVISION AT BEGINNING OF CONSTRUCTION.
8. CLEAR ALL BRUSH, STUMPS AND OTHER ORGANIC MATERIAL FROM AREAS TO BE FILLED.
9. REMOVE ALL UNSUITABLE MATERIAL (MUCK OR NON-COMPACTABLE MATERIAL) FROM AREAS TO BE FILLED AS DETERMINED BY ENGINEER.
10. GRADE BENEATH ROADWAYS AND PARKING SHALL BE COMPLETED TO FINAL GRADE AS SHOWN ON THE DRAWINGS, LESS THE PAVEMENT SECTION THICKNESS. FINISH SURFACES TO WITHIN 0.10' ABOVE OR BELOW THE REQUIRED GRADE OR APPROVED CROSS SECTION FOR THE REMAINDER OF THE SITE REQUIRED.
11. REPAIR ANY DAMAGE TO EXISTING UTILITIES OR STRUCTURES ANY LOW AREAS OR "BIRD BATHS" AS DETERMINED BY THE ENGINEER THAT EXIST IN PAVED AREAS AT NO ADDITIONAL COST TO THE OWNER.
12. FOR ALL GRASSED AREAS, BE RESPONSIBLE FOR REPLACING ERODED SOIL AND GRASS SEED UNTIL AN APPROVED STAND OF GRASS IS ESTABLISHED.
13. EACH SECTION OF PIPE SHALL BE LAID TO SPECIFIED GRADE AND LAID UPGRADE.
14. KEEP ALL ROADS ADJACENT TO SITE CLEAN DURING CONSTRUCTION.
15. ALL NEWLY CONSTRUCTED SLOPES WHICH ARE STEEPER THAN 3 TO 1 MUST BE STABILIZED BY INSTALLATION OF EROSION CONTROL MATTING. OTHER AREAS SUCH AS CHANNEL BOTTOMS, CHANNEL SIDESLOPES, AND SLOPES NEAR SENSITIVE WETLAND AREAS MAY ALSO REQUIRE EROSION CONTROL MATTING WHERE SHOWN ON PLANS. USE NORTH AMERICAN GREEN S150 OR APPROVED EQUAL.
16. ALL VEGETATION TOPSOIL SHALL BE STRIPPED AND STOCKPILED PRIOR TO PLACING FILL. TOPSOIL SHALL BE SPREAD OVER AREAS NOT TO BE PAVED PRIOR TO FINAL GRASSING.
17. ANY TEMPORARY STOCKPILES SHALL HAVE PERIMETER SILT FENCE INSTALLED AT THE BASE OF THE STOCKPILE.
18. PROPOSED FILL SOILS SHALL BE FREE OF ORGANIC MATERIAL, RUBBLE, DEBRIS, HIGHLY PLASTIC CLAYS AND SILTS AND SHALL ADHERE TO THE FILL REQUIREMENTS AND RECOMMENDATIONS OF THE GEOTECHNICAL REPORT.
19. ADDITIONAL EROSION AND SEDIMENT CONTROL MEASURES SHALL BE INSTALLED AS NECESSARY TO PREVENT SEDIMENT FROM LEAVING THE SITE.
20. REMOVE ALL DEBRIS AND OTHER MATERIAL RESULTING FROM DEMOLITION AND DISPOSE OF OFF SITE UNLESS OTHERWISE APPROVED BY OWNER.
21. CONTRACTOR SHALL FIELD VERIFY EXACT ELEVATIONS AT ALL TIE IN LOCATIONS WITH EXISTING FINISHED SURFACES AND SHALL MATCH EXISTING ROAD AND PAVEMENT GRADES AND ENSURE SMOOTH TRANSITION AT ROAD TIE IN LOCATIONS.
22. GRADES SHOWN ARE FINAL SURFACE ELEVATIONS.
23. ENSURE POSITIVE DRAINAGE OF ALL FINISHED GRADE SURFACES.
24. GRASSING SHALL BE APPLIED TO ALL DISTURBED AREAS NOT STABILIZED WITH ASPHALT, CONCRETE OR LANDSCAPED WITH PLANT MATERIALS.
25. ALL UTILITY BOXES, MANHOLES, VALVES, METER BOXES, INLETS, CLEANOUTS ETC. SHALL BE FIELD ADJUSTED TO MATCH FINISHED GRADE.
26. ALL YARD INLETS, CATCH BASINS, DROP INLETS AND CURB INLETS ARE TO BE STAMPED WITH "NO-DUMPING-DRAINS TO WATERWAY" OR APPROVED EQUAL.

REVISIONS		APPROVALS	
NO.	DESCRIPTION	PROJECT ENG.	DATE

APPROVALS		DATE	
PROJECT ENG.	DATE	PROJECT ENG.	DATE

APPROVALS		DATE	
PROJECT ENG.	DATE	PROJECT ENG.	DATE

APPROVALS		DATE	
PROJECT ENG.	DATE	PROJECT ENG.	DATE

APPROVALS		DATE	
PROJECT ENG.	DATE	PROJECT ENG.	DATE

APPROVALS		DATE	
PROJECT ENG.	DATE	PROJECT ENG.	DATE

APPROVALS		DATE	
PROJECT ENG.	DATE	PROJECT ENG.	DATE

APPROVALS		DATE	
PROJECT ENG.	DATE	PROJECT ENG.	DATE

APPROVALS		DATE	
PROJECT ENG.	DATE	PROJECT ENG.	DATE

APPROVALS		DATE	
PROJECT ENG.	DATE	PROJECT ENG.	DATE

APPROVALS		DATE	
PROJECT ENG.	DATE	PROJECT ENG.	DATE

APPROVALS		DATE	
PROJECT ENG.	DATE	PROJECT ENG.	DATE

APPROVALS		DATE	
PROJECT ENG.	DATE	PROJECT ENG.	DATE

APPROVALS		DATE	
PROJECT ENG.	DATE	PROJECT ENG.	DATE

APPROVALS		DATE	
PROJECT ENG.	DATE	PROJECT ENG.	DATE

APPROVALS		DATE	
PROJECT ENG.	DATE	PROJECT ENG.	DATE

APPROVALS		DATE	
PROJECT ENG.	DATE	PROJECT ENG.	DATE

APPROVALS		DATE	
PROJECT ENG.	DATE	PROJECT ENG.	DATE

APPROVALS		DATE	
PROJECT ENG.	DATE	PROJECT ENG.	DATE

APPROVALS		DATE	
PROJECT ENG.	DATE	PROJECT ENG.	DATE

APPROVALS		DATE	
PROJECT ENG.	DATE	PROJECT ENG.	DATE

APPROVALS		DATE	
PROJECT ENG.	DATE	PROJECT ENG.	DATE

APPROVALS		DATE	
PROJECT ENG.	DATE	PROJECT ENG.	DATE

APPROVALS		DATE	
PROJECT ENG.	DATE	PROJECT ENG.	DATE

APPROVALS		DATE	
PROJECT ENG.	DATE	PROJECT ENG.	DATE

APPROVALS		DATE	
PROJECT ENG.	DATE	PROJECT ENG.	DATE

APPROVALS		DATE	
PROJECT ENG.	DATE	PROJECT ENG.	DATE

APPROVALS		DATE	
PROJECT ENG.	DATE	PROJECT ENG.	DATE

APPROVALS		DATE	
PROJECT ENG.	DATE	PROJECT ENG.	DATE

APPROVALS		DATE	
PROJECT ENG.	DATE	PROJECT ENG.	DATE

APPROVALS		DATE	
PROJECT ENG.	DATE	PROJECT ENG.	DATE

APPROVALS		DATE	
PROJECT ENG.	DATE	PROJECT ENG.	DATE

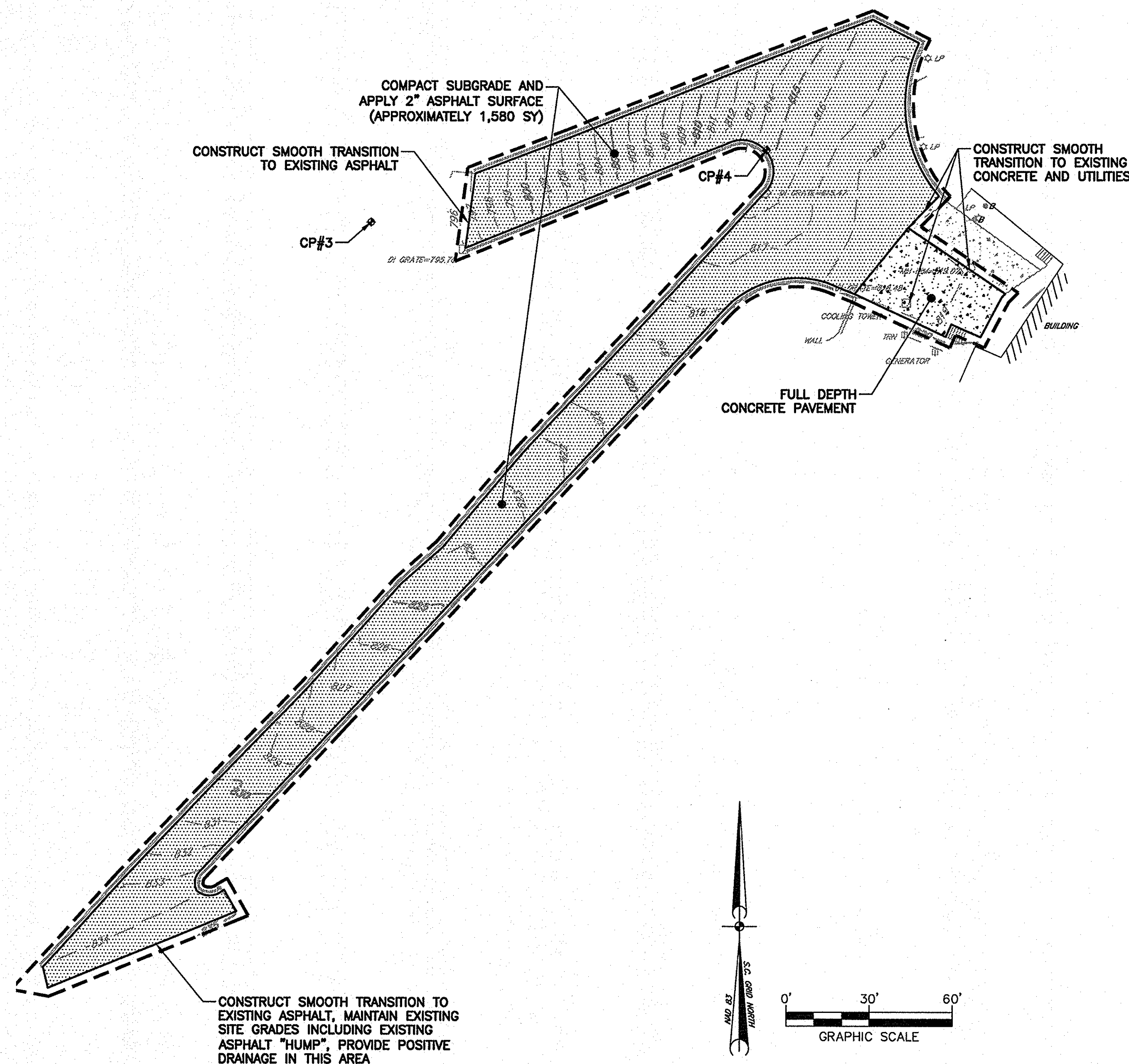
APPROVALS</	
-------------	--



1. VERIFY FIELD CONDITIONS PRIOR TO CONSTRUCTION AND NOTIFY THE ENGINEER IF ANY DIFFERING SITE CONDITIONS ARE NOTED.
2. ALL TRAFFIC SIGNS AND PAVEMENTS MARKINGS WITHIN PARKING AREA SHALL MEET ALL REQUIREMENTS OF THE SCDOT MANUAL ON UNIFORM TRAFFIC CONTROL DEVICES, SPARTANBURG COUNTY AND USC UPSTATE REGULATIONS.
3. ALL WORK AND MATERIALS SHALL CONFORM TO SPARTANBURG COUNTY AND SCDHEC REGULATIONS AND SPECIFICATIONS, LATEST REVISION AT BEGINNING OF CONSTRUCTION.
4. ALL DIMENSIONS AND RADII ARE TO EDGE OF PAVEMENT, UNLESS OTHERWISE NOTED.
5. RADII ON ALL ISLANDS ARE 5' UNLESS OTHERWISE NOTED.
6. ALL PAVEMENT MARKINGS SHALL BE WHITE UNLESS OTHERWISE NOTED, ADA PAVEMENT MARKINGS SHALL BE BLUE.

1. ALL ELEVATIONS ARE BASED ON REFERENCED BENCHMARK DATUM.
2. WHEN GRADING BETWEEN CONTOURS AND BETWEEN POINTS OF SPOT ELEVATIONS, GRADE ON A UNIFORM SLOPE.
3. CONTRACTOR TO FIELD VERIFY EXISTING SITE GRADES PRIOR TO CONSTRUCTION. CONTRACTOR SHALL MAINTAIN CROSS SECTIONS AND SLOPE OF EXISTING ROADWAYS AND PARKING.
4. BEFORE BEGINNING GRADING WORK ON SITE, STAKE SILT FENCE AS SHOWN ON THE PLANS, AS SEDIMENT BUILDS UP AROUND SILT FENCE, REMOVE SEDIMENT AND REPLACE WHERE EROSION HAS TAKEN PLACE.
5. INSTALL AND MAINTAIN TEMPORARY EROSION CONTROL MEASURES UNTIL STABILIZATION IS ACHIEVED.
6. PROMPTLY INFORM THE ENGINEER OF ANY ERROR OR DISCREPANCIES DISCOVERED IN THE DRAWINGS OR SPECIFICATIONS OR CONFLICT BETWEEN THE DRAWINGS OR SPECIFICATIONS IN ORDER FOR CORRECTIONS TO BE MADE.
7. ALL WORK SHALL CONFORM TO THE ORDINANCES OF STANTISBURG COUNTY AND SCDHCE REGULATIONS AND SPECIFICATIONS, LATEST REVISION AT BEGINNING OF CONSTRUCTION.
8. CLEAR ALL BRUSH, STUMPS AND OTHER ORGANIC MATERIAL FROM AREAS TO BE FILLED.
9. REMOVE ALL UNSUITABLE MATERIAL (MUCK OR NON-COMPACTABLE MATERIAL) FROM AREAS TO BE FILLED AS DETERMINED BY ENGINEER.
10. GRADE BENEATH ROADWAYS AND PARKING SHALL BE COMPLETED TO FINAL GRADE AS SHOWN ON THE DRAWINGS LESS THE PAVEMENT SECTION THICKNESS. FINISH SURFACES TO WITHIN 0.10' ABOVE OR BELOW THE REQUIRED GRADE OR APPROVED CROSS SECTION FOR THE REMAINDER OF THE SITE REQUIRED.
11. REPAIR ANY DAMAGE TO EXISTING UTILITIES OR STRUCTURES ON ANY LOW AREAS OR "BIRD BATHS" AS DETERMINED BY THE ENGINEER THAT EXIST IN PAVED AREAS AT NO ADDITIONAL COST TO THE OWNER.
12. FOR ALL GRASSED AREAS, BE RESPONSIBLE FOR REPLACING ERODED SOIL AND GRASS SEED UNTIL AN APPROVED STAND OF GRASS IS ESTABLISHED.
13. EACH SECTION OF PIPE SHALL BE LAID TO SPECIFIED GRADE AND LAID UPGRADE.
14. KEEP ALL ROADS ADJACENT TO SITE CLEAN DURING CONSTRUCTION.

15. ALL NEWLY CONSTRUCTED SLOPES WHICH ARE STEEPER THAN 3 TO 1 MUST BE STABILIZED BY INSTALLATION OF EROSION CONTROL MATTING. OTHER AREAS SUCH AS CHANNEL BOTTOMS, CHANNEL SIDESLOPES, AND SLOPES NEAR SENSITIVE WETLAND AREAS MAY ALSO REQUIRE EROSION CONTROL MATTING WHERE SHOWN ON PLANS. USE NORTH AMERICAN GREEN S150 OR APPROVED EQUAL.
16. ALL VEGETATION TOPSOIL SHALL BE STRIPPED AND STOCKPILED PRIOR TO PLACING FILL. TOPSOIL SHALL BE SPREAD OVER AREAS NOT TO BE PAVED PRIOR TO FINAL GRASSING.
17. ANY TEMPORARY STOCKPILES SHALL HAVE PERIMETER SILT FENCE INSTALLED AT THE BASE OF THE STOCKPILE.
18. PROPOSED FILL SOILS SHALL BE FREE OF ORGANIC MATERIAL, RUBBLE, DEBRIS, HIGHLY PLASTIC CLAYS, AND ALL OTHERS APPLICABLE TO THE FILL REQUIREMENTS AND RECOMMENDATIONS OF THE GEOTECHNICAL REPORT.
19. ADDITIONAL EROSION AND SEDIMENT CONTROL MEASURES SHALL BE INSTALLED AS NECESSARY TO PREVENT SEDIMENT FROM LEAVING THE SITE.
20. REMOVE ALL DEBRIS AND OTHER MATERIAL RESULTING FROM DEMOLITION AND DISPOSE OF OFF SITE UNLESS OTHERWISE APPROVED BY OWNER.
21. CONSTRUCTED SLOPES SHALL BE FINISHED TO ELEVATION AT ALL TIE IN LOCATIONS WITH EXISTING FINISHED SURFACES AND SHALL MATCH EXISTING ROAD AND PAVEMENT GRADES AND ENSURE SMOOTH TRANSITION AT ROAD TIE IN LOCATIONS.
22. GRADES SHOWN ARE FINAL SURFACE ELEVATIONS.
23. ENSURE POSITIVE DRAINAGE OF ALL FINISHED GRADE SURFACES.
24. GRASSING SHALL BE APPLIED TO ALL DISTURBED AREAS NOT STABILIZED WITH ASPHALT, CONCRETE, OR APPROVED WITH-LAND MATERIALS.
25. ALL UTILITY BOXES, MANHOLES, VALVES, METER BOXES, INLETS, CLEANOUTS ETC. SHALL BE FILL ADJUSTED TO MATCH FINISHED GRADE.
26. ALL YARD INLETS, CATCH BASINS, DROP INLETS AND CURB INLETS ARE TO BE STAMPED WITH " NO-DRAINAGE-DRAINS TO WATERWAY" OR APPROVED EQUAL.



SITE G  
SCALE: 1"=30'

**CP#3**  
MAGNAIL  
ELEVATION = 794.787'  
NORTHING = 1153160.787'  
EASTING = 1709241.131'

**CP#4**  
HUBNAIL  
ELEVATION = 814.560'  
NORTHING = 1153187.130'  
EASTING = 1709383.977'

**SHEET TITLE**

SITE IMPROVEMENT  
PLAN  
SITE G

DATE: JUNE 6, 2014	SCALE: 1"=30'
--------------------	---------------

SUBJECT USC UPSTATE  
STREET AND PARKING LOT  
MAINTENANCE AND REPAIRS  
PREPARED FOR

THE UNIVERSITY OF  
SOUTH CAROLINA

SPARTANBURG COUNTY SOUTH CAROLINA

DWG NAME
N.B. NO.
REF.
PROJECT NO 4642327

SHEET  
5  
OF  
7

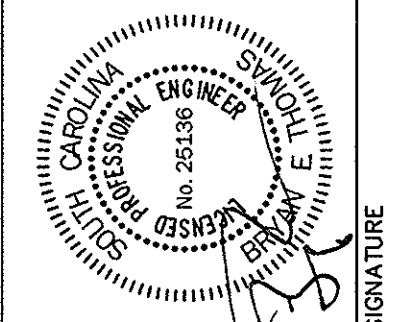
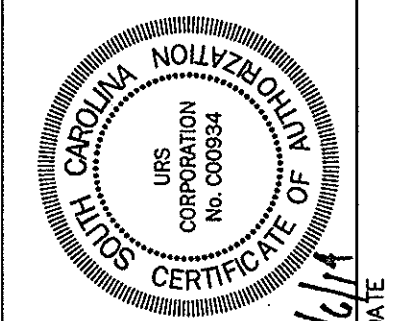
FILE NO. 36,308-B91

**STATE PROJECT NO.**  
**H34-9544-JM-F**

## BID DOCUMENTS

**THESE DOCUMENTS ARE FOR THE  
PURPOSE OF SOLICITATION OF BIDS AND  
ARE NOT FOR USE FOR CONSTRUCTION**

APPROVALS		REVISIONS			
PROJECT ENG:		NO.	DESCRIPTION	DATE	BY
DESIGNED BY:	MDJ	✓			
DRAWN BY:	MDJ	✓			
CHKD BY:	EHM	✓			
BET	BET	✓			
APPROVED:	APPROVED:	✓			
BET	BET	✓			



**SIGNATURE**

**URS**  
101 Research Drive  
Columbia, South Carolina 29203  
Telephone (803) 254-4400 • Fax (803) 771-6676  
[www.URSCorp.com](http://www.URSCorp.com)







### GENERAL NOTES

- ## GRASSING NOTES

GRASSING NOTES

1. SEED THESE AREAS IMMEDIATELY UPON COMPLETION OF GRADING OR CONSTRUCTION AND CLEAN-UP OPERATIONS.
  - A. SLOPES GREATER THAN FOUR HORIZONTAL TO ONE VERTICAL.
  - B. UTILITY RIGHTS-OF-WAY ADJACENT TO STREAM BANKS.
2. AREAS READY FOR PLANTING BETWEEN AUGUST 16 AND FEBRUARY 28 SHALL BE PLANTED WITH A TEMPORARY COVER OF SCHEDULE NO. 2. AT THE ACCEPTABLE SEASONS FOR PLANTING SCHEDULE NO. 1, THE TURF SHALL BE DESTROYED BY REWORKING THE SOIL, AND SCHEDULE NO. 1 SEEDING ESTABLISHED AS SPECIFIED HEREIN.
3. USE RATE 1 LBS. PER 1000 SQ. FT. ON SLOPES OVER 5' HORIZONTAL TO 1' VERTICAL. IN PLANTING AREAS OF 5' HORIZONTAL TO 1' VERTICAL, USE RATE 1 LBS. PER 1000 SQ. FT. ON SLOPES LESS THAN 5' HORIZONTAL TO 1' VERTICAL.
4. SEE GRASSING SPECIFICATIONS (SECTION 02930) FOR ADDITIONAL REQUIREMENTS.

GRASSING SCHEDULES:

GRASSING SCHEDULE NO. 1 - PLANTING DATES MARCH 1 TO AUGUST 15:

COMMON NAME OF SEED	RATE A	RATE B
RYE GRAIN	1	1
COMMON BERMUDA (HULLED)	0	1.5
SERICEA LESPEDEZA (CLAY SOILS)	1	0
WEEPING LOVE GRASS (SANDY SOILS)	1	0
CENTPEDE	0.5	0.5
FERTILIZER	18-25	18-25

GRASSING SCHEDULE NO. 2 - PLANTING DATES AUGUST 16 - FEBRUARY 28:

COMMON NAME OF SEED	RATE A	RATE B
RYE GRAIN	0	1
COMMON BERMUDA (HULLED)	0	1.5
BROWN TOP MILLET	5	0
COMMON BERMUDA (UNHULLED)	0	2.0
FERTILIZER	18-25	18-25

ALL DISTURBED AREAS WHICH ARE TO BE LEFT IDLE FOR A PERIOD OF 14 DAYS OR LONGER ARE TO RECEIVE TEMPORARY VEGETATION OR MULCH.

ALL SEDIMENT AND EROSION CONTROLS ARE TO BE INSPECTED AT LEAST ONCE EVERY SEVEN (7) CALENDAR DAYS. CONTRACTOR TO DOCUMENT WITH SCDHEC APPROVED INSPECTION REPORTS AND LOGGED IN THE PROJECT SWPPP.

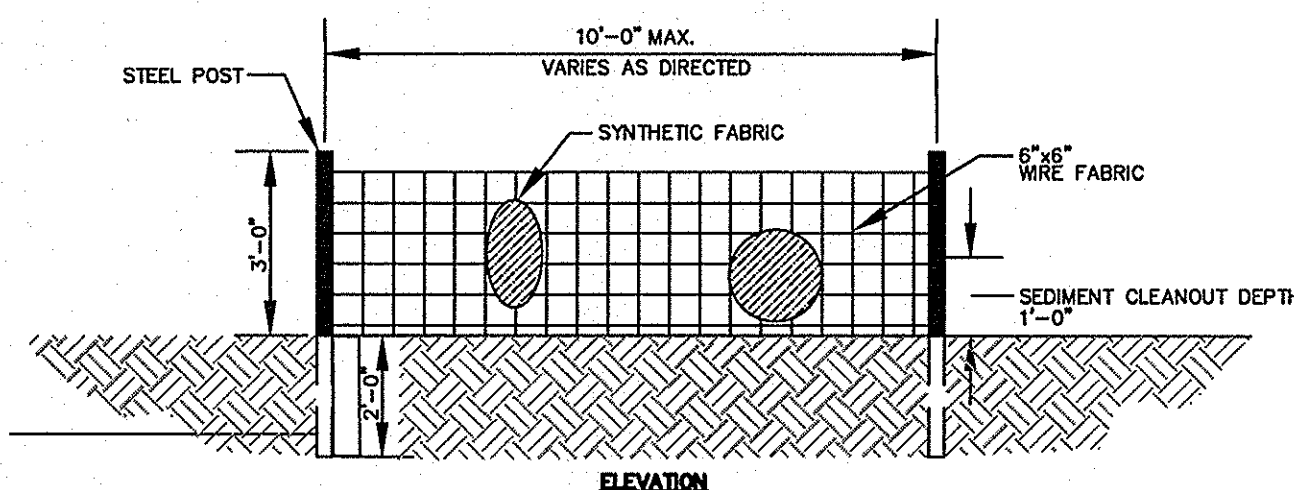
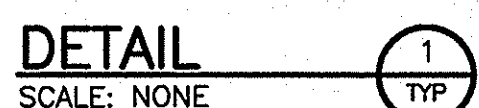
- IF NECESSARY, SLOPES, WHICH EXCEED EIGHT (8) VERTICAL FEET SHOULD BE STABILIZED WITH SYNTHETIC OR VEGETATIVE MATS, IN ADDITION TO HYDROSEEDING. IT MAY BE NECESSARY TO INSTALL TEMPORARY SLOPE DRAINS DURING CONSTRUCTION. TEMPORARY DRAINS WILL BE REMOVED UNTIL THE SLOPE IS BROUGHT TO GRADE.
2. STABILIZATION MEASURES SHALL BE INITIATED AS SOON AS IMPRACTICABLE IN PORTIONS OF THE SITE WHERE CONSTRUCTION ACTIVITIES HAVE TEMPORARILY OR PERMANENTLY CEASED, BUT IN NO CASE MORE THAN FOURTEEN (14) DAYS AFTER WORK HAS CEASED, EXCEPT AS STATED BELOW.
  - A. WHERE STABILIZATION BY THE 14TH DAY IS PRECLUDED BY SNOW COVER OR FROZEN GROUND CONDITIONS STABILIZATION MEASURES MUST BE INITIATED AS SOON AS PRACTICABLE.
  - B. WHERE CONSTRUCTION ACTIVITY ON A PORTION OF THE SITE IS TEMPORARILY CEASED, & EARTH-DISTURBING ACTIVITIES WILL BE RESUMED WITHIN 14 DAYS, TEMPORARY STABILIZATION MEASURES DO NOT HAVE TO BE INITIATED ON THAT PORTION OF THE SITE.
3. ALL SEDIMENT & EROSION CONTROL DEVICES SHALL BE INSPECTED EVERY CALENDAR WEEK. IF PERIODIC INSPECTION OR OTHER INFORMATION INDICATES THAT A BMP HAS BEEN INAPPROPRIATELY OR INCORRECTLY INSTALLED, THE PERMITTEE MUST ADDRESS THE NECESSARY REPAIRS AND/OR MODIFICATION REQUIRED TO CORRECT THE BMP WITHIN 48 HOURS OF IDENTIFICATION.
4. PROVIDE SILT FENCE AND/OR OTHER CONTROL DEVICES, AS MAY BE REQUIRED, TO CONTROL SOIL EROSION DURING UTILITY CONSTRUCTION. ALL DISTURBED AREAS SHALL BE CLEANED, GRADED, AND STABILIZED WITH GRASSING IMMEDIATELY AFTER THE UTILITY INSTALLATION. FILL, COVER, AND STABILIZE ALL AREAS OF EROSION EACH DAY ARE RECOMMENDED. IF WATER IS ENCOUNTERED WHILE TRENCHING, THE WATER SHOULD BE FILTERED TO REMOVE ANY SEDIMENTS BEFORE BEING PUMPED BACK INTO ANY WATERS OF THE STATE.
5. ALL EROSION CONTROL DEVICES SHALL BE PROPERLY MAINTAINED DURING ALL PHASES OF CONSTRUCTION UNTIL THE COMPLETION OF ALL CONSTRUCTION ACTIVITIES & ALL DISTURBED AREAS BEING MAINTAINED TO PREVENT EROSION. EROSION CONTROL DEVICES SHALL BE MAINTAINED IN ORDER TO CONTROL EROSION AND/OR OFFSITE SEDIMENTATION. TEMPORARY CONTROL DEVICES SHALL BE REMOVED ONCE CONSTRUCTION IS COMPLETE AND THE SITE IS STABILIZED.
6. THE CONTRACTOR MUST TAKE NECESSARY ACTION TO MINIMIZE THE TRACKING OF MUD ONTO PAVED ROADWAY(S) FROM CONSTRUCTION AREAS & THE GENERATION OF DUST. THE CONTRACTOR SHALL DAILY REMOVE MUD FROM ROADWAYS & DUST SUPPRESSION MAY BE REQUIRED.
7. RESIDENTIAL SUBDIVISIONS REQUIRE EROSION CONTROL FEATURES FOR INFRASTRUCTURE AS WELL, AS FOR INDIVIDUAL LOT CONSTRUCTION. INDIVIDUAL PROPERTY OWNERS SHALL FOLLOW THESE PLANS DURING CONSTRUCTION OR OBTAIN APPROVAL OF AN INDIVIDUAL PLAN IN ACCORDANCE WITH S.C. REG. 72-300 ET. SEQ. AND SCRI000000.
8. TEMPORARY DIVERSION BERMS AND/OR DITCHES WILL BE PROVIDED AS NEEDED DURING CONSTRUCTION OF CONSTRUCTION AREAS FROM SLOPE ROADS AND/OR TO DIVERT SEDIMENT-LADEN WATER TO APPROPRIATE TRAPS OR STABLE OUTLETS.
9. ALL WATERS OF THE STATE (WOS), INCLUDING WETLANDS, ARE TO BE FLAGGED OR OTHERWISE CLEARLY MARKED IN THE FIELD. A DOUBLE ROW OF SILT FENCE IS TO BE INSTALLED IN ALL AREAS WHERE A 50-FOOT BUFFER CAN'T BE MAINTAINED BETWEEN THE DISTURBED AREA AND ALL WOS. A 100-FOOT BUFFER SHOULD BE MAINTAINED BETWEEN THE LAST ROW OF SILT FENCE AND WOS.
10. LITTER, CONSTRUCTION DEBRIS, OILS, FUELS, & BUILDING PRODUCTS WITH SIGNIFICANT POTENTIAL FOR IMPACT (SUCH AS STOCKPILES OF FRESHLY TREATED LUMBER) & CONSTRUCTION CHEMICALS THAT COULD BE EXPOSED TO STORM WATER MUST BE PREVENTED FROM BECOMING A POLLUTANT SOURCE IN STORM WATER DISCHARGES.
11. THE COMPANY, THE CONTRACTOR, AND THE MODIFIED OR ADDITIONAL BMP SHALL BE RETAINED AT THE CONSTRUCTION SITE OR A NEARBY LOCATION EASILY ACCESSIBLE DURING NORMAL BUSINESS HOURS, FROM THE DATE OF COMMENCEMENT OF CONSTRUCTION ACTIVITIES TO THE DATE THAT FINAL STABILIZATION IS REACHED.
12. INITIATE STABILIZATION MEASURES ON ANY EXPOSED STEEP SLOPE (3H:1V OR GREATER) IMMEDIATELY. CONSTRUCTION ACTIVITIES SHALL BE PERMANENTLY OR TEMPORARILY CEASED, & WILL NOT RESUME FOR A PERIOD OF 7 CALENDAR DAYS.
  - A. MINIMIZE SOIL DISPERSION & UNLESS INFEASIBLE, PRESERVE TOPSOIL.
  - B. MINIMIZE THE DISCHARGE OF POLLUTANTS FROM EQUIPMENT & VEHICLE WASHING, WHEEL WASH WATER & OTHER WASH WATERS. WASH WATERS MUST BE TREATED IN A SEDIMENT TRAP OR AN ALTERNATIVE CONTROL THAT PROVIDES EQUIVALENT OR BETTER TREATMENT PRIOR TO DISCHARGE.
  - C. MINIMIZE THE DISCHARGE OF POLLUTANTS FROM DETERATING OF TRENCHES & EXCAVATED AREAS. THESE DISCHARGES ARE TO BE ROUTED THROUGH APPROPRIATE BMPS (SEDIMENT BASIN, FILTER BAG, ETC.)
16. THE FOLLOWING DISCHARGES FROM SITES ARE PROHIBITED:
  - A. WASH WATER FROM WASHOUT OF CONCRETE, UNLESS MANAGED BY APPROPRIATE CONTROL;
  - B. WASTEWATER FROM WASHOUT/CLEANOUT OF STUCCO, PAINT, FORM RELEASE OILS, CURING COMPOUNDS & OTHER CONSTRUCTION MATERIALS;
  - C. FUELS, OILS, OR OTHER POLLUTANTS USED IN VEHICLE & EQUIPMENT OPERATION & MAINTENANCE;
  - D. SOAPS OR SOLVENTS USED IN VEHICLE & EQUIPMENT WASHING
17. AFTER CONSTRUCTION ACTIVITIES BEGIN, INSPECTIONS MUST BE CONDUCTED AT A MINIMUM OF AT LEAST ONCE EVERY CALENDAR WEEK & MUST BE CONDUCTED UNTIL FINAL STABILIZATION IS REACHED ON ALL AREAS OF THE CONSTRUCTION SITE.
18. IF EXISTING BMPS ARE NOT EFFECTIVE OR IF ADDITIONAL BMP'S ARE NECESSARY TO COMPLY WITH THE REQUIREMENTS OF THIS PERMIT AND/OR SC'S WATER QUALITY STANDARDS IMPLEMENTATION MUST BE COMPLETED BEFORE THE NEXT STORM EVENT WHENEVER PRACTICABLE. IF IMPLEMENTATION IS IMPRACTICABLE, THE SITUATION MUST BE DOCUMENTED IN THE SWPPP AND ALTERNATIVE BMPS MUST BE IMPLEMENTED AS SOON AS REASONABLY POSSIBLE.
19. A PRE-CONSTRUCTION CONFERENCE MUST BE HELD FOR EACH CONSTRUCTION SITE WITH AN APPROVED ON-SITE SWPPP PRIOR TO THE IMPLEMENTATION OF CONSTRUCTION ACTIVITIES. FOR NON-LINEAR PROJECTS THAT DISTURB 10 ACRES OR MORE THIS CONFERENCE MUST BE HELD ON-SITE UNLESS THE DEPARTMENT HAS APPROVED OTHERWISE.
20. CONSTRUCTION OF THE PROJECT SHALL BE STOPPED IMMEDIATELY IF THE CONSTRUCTION SITE AND RAIN TOTALS DOCUMENTED FOR REVIEW BY SPARTANBURG COUNTY AND SCDEC.
21. A PRE-CONSTRUCTION CONFERENCE MUST BE HELD WITH SPARTANBURG COUNTY AT LEAST 48 HOURS PRIOR TO BEGINNING ANY LAND DISTURBING ACTIVITIES. THE OWNER, DESIGN ENGINEER AND CONTRACTOR MUST BE PRESENT AND HAVE OBTAINED THE STORMWATER PERMIT SAMPLED PRIOR TO THE CONFERENCE. THE CONFERENCE SHALL BE HELD PRIOR TO CALLING SPARTANBURG COUNTY AT 864-595-5320 TO SCHEDULE THIS MEETING.

1. RECEIVE NOTIFICATION OF NPDES COVERAGE FROM SPARTANBURG COUNTY AND SCDCHE. COORDINATE PRE-CONSTRUCTION MEETING ON-SITE AND NOTIFY SPARTANBURG COUNTY OFFICE AT LEAST 48 HOURS IN ADVANCE OF LAND DISTURBING ACTIVITIES.
2. INSTALL STABILIZED CONSTRUCTION ENTRANCE, SILT FENCE, RAIN GAUGE AND PERIMETER SOIL EROSION CONTROL MEASURES. BEGIN PERFORMING WEEKLY SCDCHE SWPPP INSPECTIONS UNTIL SITE IS PERMANENTLY STABILIZED.
3. PERFORM DEMOLITION OPERATIONS AS SHOWN ON THE PLANS AND CLEAR AND GRUB SITE IN THE AREAS TO BE DEVELOPED. REMOVE AND DISPOSE OF ITEMS OFFSITE AS APPROPRIATE.
4. STRIP AND STOCKPILE TOPSOIL AND STABILIZE STOCKPILES AS NOTED IN THE PLANS AND SPECIFICATIONS.
5. PERFORM GRADING OPERATIONS ON THE SITE. INSTALL STORM DRAINAGE IN CONJUNCTION WITH GRADING.
6. INSTALL EROSION CONTROL DEVICES AS REQUIRED OR NEEDED AS STORM DRAINAGE STRUCTURES AND THE SITE ARE EXTENDED TO FINISHED GRADE.
7. STOCKPILE UNUSED MATERIAL AND STABILIZE AS NOTED ON THE PLANS AS CONSTRUCTION PROGRESSES.
8. CONSTRUCT REMAINDER OF THE SITE IMPROVEMENTS.
9. APPLY TOPSOIL AND INITIATE PERMANENT VEGETATIVE STABILIZATION MEASURES AS FINAL GRADE IS REACHED IN AREAS TO BE UNDEVELOPED.
10. INSPECT AND MAINTAIN ALL STORMWATER CONTROLS AND SEDIMENT AND EROSION CONTROL MEASURES UNTIL THE SITE IS COMPLETELY STABILIZED.
11. UPON COMPLETE STABILIZATION OF SITE, REMOVE ALL TEMPORARY SEDIMENT AND EROSION CONTROL MEASURES AND REMOVE SEDIMENT BUILDUP FROM THE STORMWATER SYSTEM.
12. SUBMIT TO THE FIELD OFFICE OF ALL STORMWATER IMPROVEMENTS, INCLUDING BUT NOT LIMITED TO PIPES, STRUCTURE LOCATIONS, INVERTS, RM/GRADE ELEVATIONS, DETENTION/RETENTION PONS, EMERGENCY SPILLWAYS AND OUTLET STRUCTURES.
13. SUBMIT NOTICE OF TERMINATION (NOT) TO SCDCHE AS APPROPRIATE (BY ENGINEER).

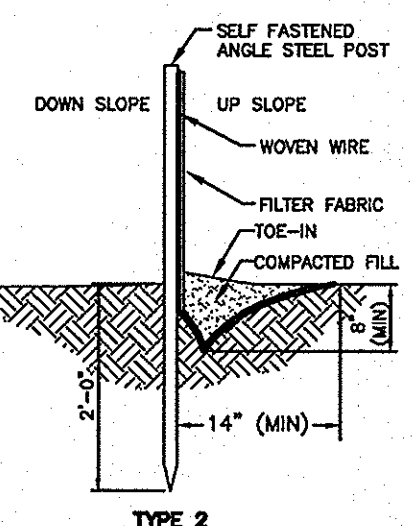
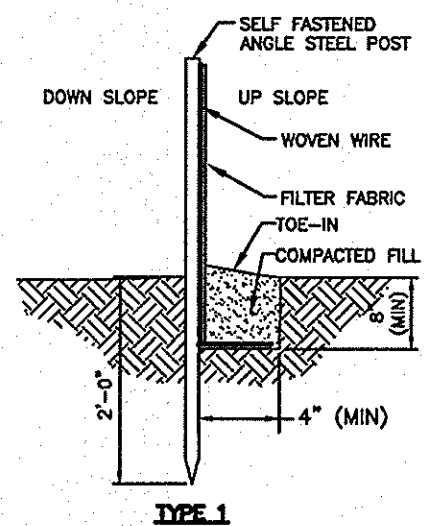
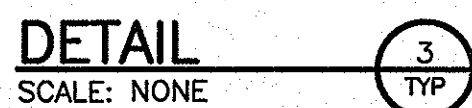


1. PLACE AN ADEQUATE NUMBER OF SEDIMENT TUBES AROUND AN INLET TO PROVIDE COMPLETE PROTECTION. LEAVE APPROXIMATELY 3"-6" BETWEEN THE SEDIMENT TUBE AND THE INLET OR GRATE.
2. ENDS SHOULD OVERLAP 12-18 INCHES. SIDES SHOULD BE PRESSED TIGHTLY TO CURB.
3. USE SMALL DEBRIS TO HOLD THE INLET PLATE IN PAVED AREAS. USE WOOD STAKES TO SECURE TUBES IN PLACE IN UNPAVED AREAS.
4. INSPECT INLET PROTECTION DEVICE BEFORE AND AFTER RAIN EVENTS, AND WEEKLY THROUGHOUT THE RAINY SEASON. DURING EXTENDED RAIN EVENTS, INSPECT AT LEAST ONCE EVERY 24 HOURS.
5. REMOVE AND PROPERLY DISPOSE OF ACCUMULATED SILT AND DEBRIS TO ALLOW FOR PROPER FUNCTION OF DEVICE.
6. COMPLY WITH ALL MANUFACTURERS SPECIFICATIONS AND INSTRUCTIONS.

-FILTER FABRIC

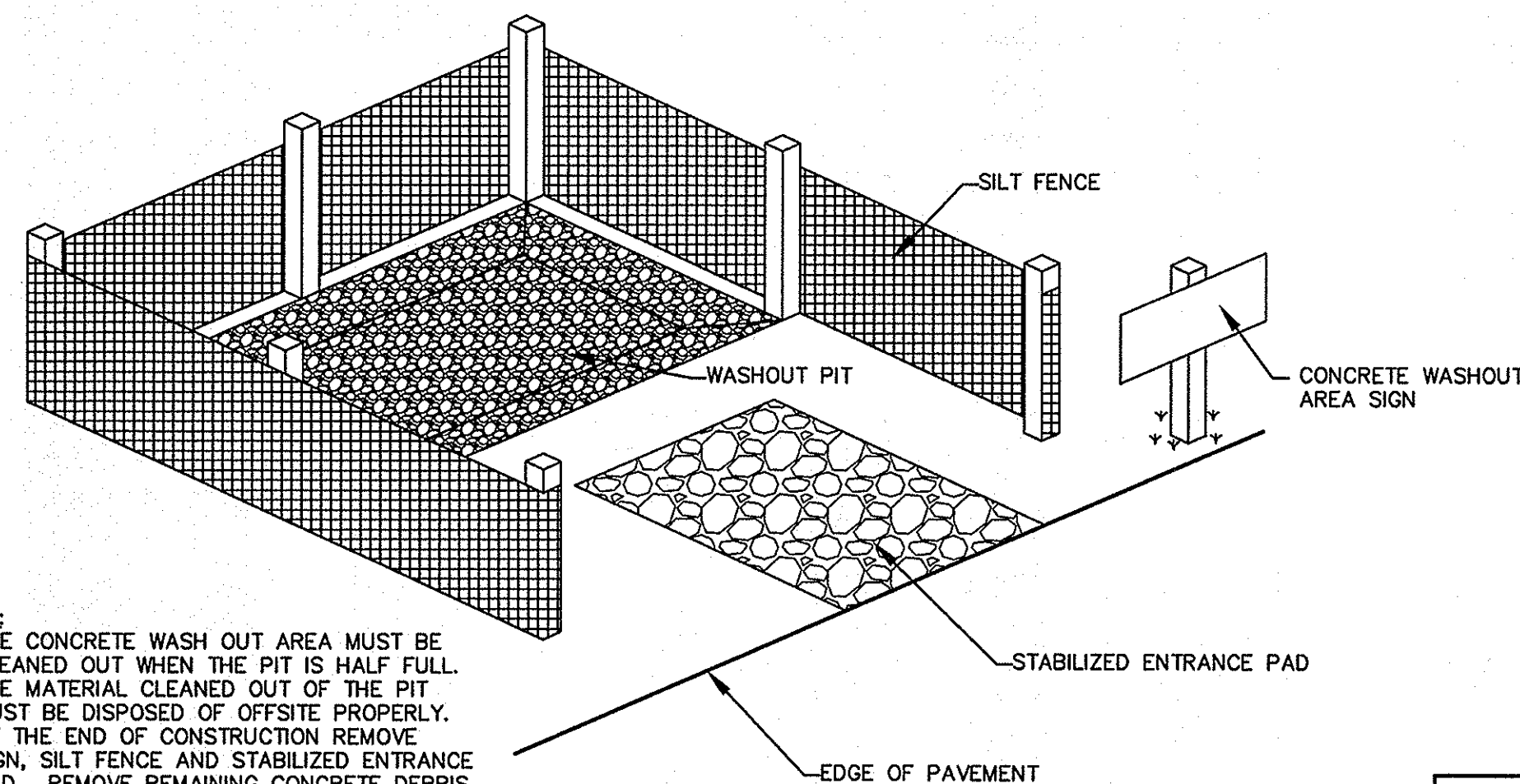


## SILT FENCE WITH WIRE FABRIC



- NOTES:**
1. FILTER FABRIC SHALL BE A MINIMUM 24" IN WIDTH.
  2. SYNTHETIC FILTER FABRIC SHALL BE ON SCODT APPROVED MATERIALS LIST #34.
  3. STEEL POSTS SHALL BE 5'-0" IN HEIGHT AND BE OF THE SELF - FASTENER
  4. STEEL TYPE CONTRACTOR SHALL PERFORM INSPECTION AND MAINTENANCE OF SILT FENCES FOLLOWING ALL SIGNIFICANT RAINFALL EVENTS, ENSURING FENCES ARE ERECT AND OPERATIONAL, AND REPLACING ALL TORN FENCING.
  5. USE TYPE 1 IN ALL OTHER CASES. USE TYPE 2 IN AREAS WHERE TOE-IN CUT TRENCH IS DIFFICULT TO EXCAVATE.
  6. USE COVER WIRE WHEN WETLANDS ARE WITHIN 50' OF FENCE.

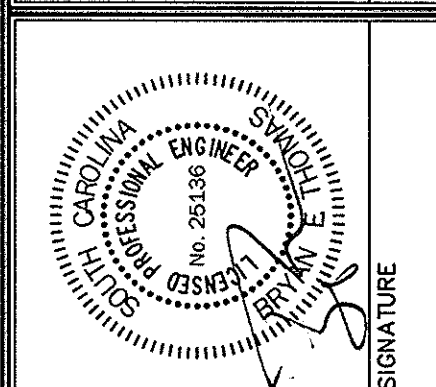
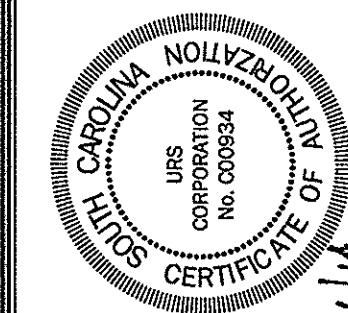
TOP SOIL & SPOIL STORAGE



CONCRETE WASHOUT AREA



APPROVALS		REVISIONS			
PROJECT ENG:		NO.	DESCRIPTION	DATE	BY
DESIGNED BY:	MDJ	✓			
DRAWN BY:	MDJ	✓			
CHECKED BY:	EHM	✓			
BET	BET	✓			
APPROVED:	BET	✓			



**URS**  
101 Research Drive  
Columbia, South Carolina 29203  
Telephone (803) 254-4400 • Fax (803) 771-6676  
[www.URS Corp.com](http://www.URS Corp.com)

SITE DETAILS  
2 OF 2

SHEET TITLE

PROJECT USC UPSTATE  
STREET AND PARKING LOT  
MAINTENANCE AND REPAIRS  
PREPARED FOR  
THE UNIVERSITY OF  
SOUTH CAROLINA

.DWG NAME	SHEET
N.B. NO.	7
REF.	OF
PROJECT NO.	7
46423272	

FILE NO. 36,308-B91

**STATE PROJECT NO.**  
**H34-9544-JM-F**

## BID DOCUMENTS

**THESE DOCUMENTS ARE FOR THE  
PURPOSE OF SOLICITATION OF BIDS AND  
ARE NOT FOR USE FOR CONSTRUCTION**